








\* All images used are for illustrative purposes only.



Download  
LG C-Display+  
Mobile App

Google Play Store

-  [www.lg.com/b2b](http://www.lg.com/b2b)
-  [www.youtube.com/c/LGCommercialDisplay](https://www.youtube.com/c/LGCommercialDisplay)
-  [www.facebook.com/LGInformationDisplay](https://www.facebook.com/LGInformationDisplay)
-  [www.linkedin.com/company/LGInformationDisplay](https://www.linkedin.com/company/LGInformationDisplay)

LG may make changes to specifications and product descriptions without notice.  
Copyright © 2019 LG Electronics Inc. All rights reserved. "LG Life's Good" is a registered trademark of LG Corp.  
The names of products and brands mentioned here may be the trademarks of their respective owners.



2019 GLOBAL

# LG DIGITAL SIGNAGE

Information Display and Solutions

# Shape Immersive Moments. Share Innovative Experience.

Believe your business should be more impactful and iconic. LG Business Solution is here to realize the true potential of your business.

Display all your boundless ideas on digital signage and watch the technology of LG Business Solutions shapes them into immersive moments.

Make your ideas more outstanding through reality and vividness beyond your imagination and interactivity that allows people to engage.

All immersive moments combines to create innovative experience for your business.





## | COLOR TRANSPARENT LED FILM

Seamlessly Color Your Space and Brand

LG's revolutionary Color Transparent LED film endows the glass surface or window to which it is attached with a mystical beauty full of vivid color, while interacting seamlessly with the surrounding environment.

### High Transparency

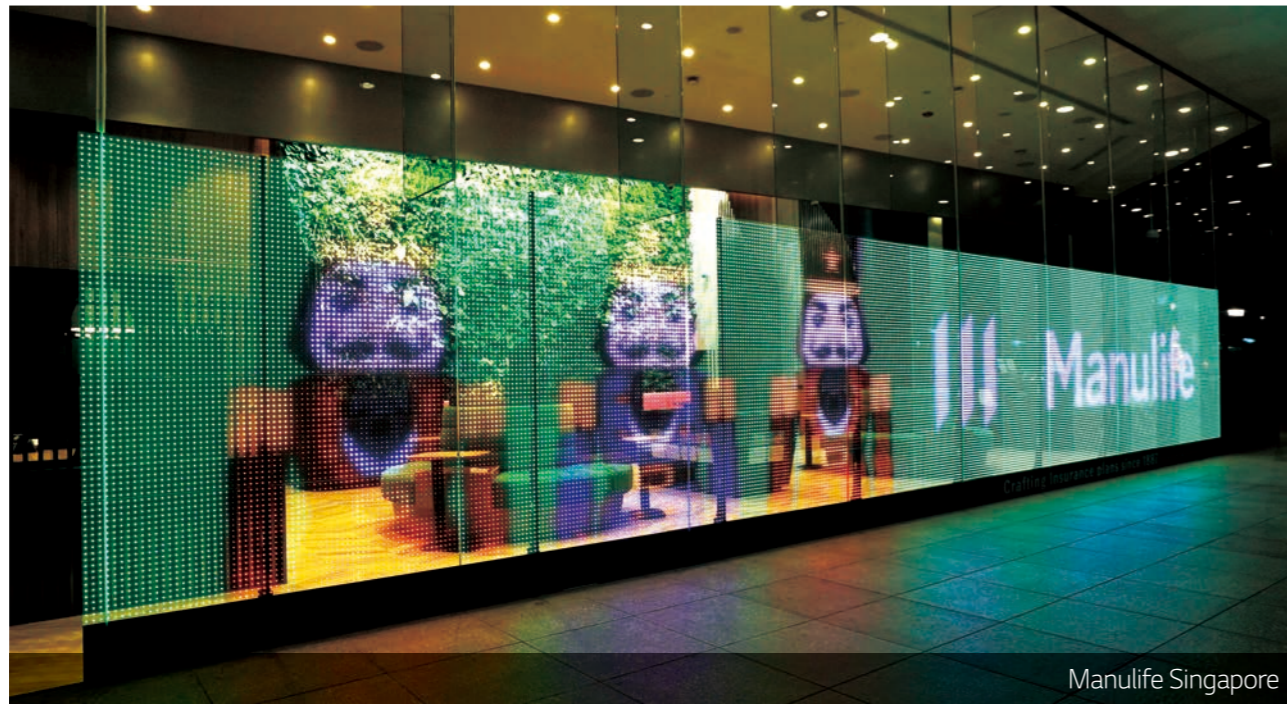
High transparency (73%\*) allows glass to remain visible even after attaching the color transparent LED film, with no adverse effects on the original design. Displaying dynamic content as digital signage, it blends into the glass as well.



\* 73% transparency is similar to that of a car's tinted front window.

### Full Color Expression

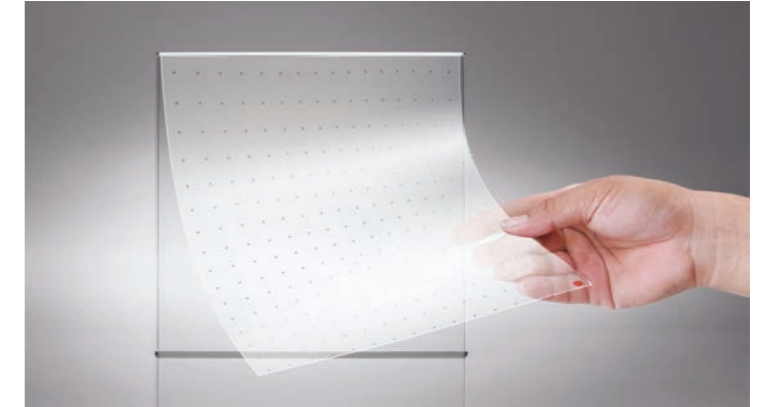
LG Color Transparent LED film delivers a surprisingly wide range of colors using a 24 mm pitch, while still maintaining a high transparency. Applications are not confined to delivering simple brand logos or pictograms, but can be extended to display an entire video or pictures in which various colors are combined.



\* Indoor installation only

### Self-adhesive Film

The transparent LED film is self-adhesive, so it can be easily attached to the surfaces of existing window glass without the need for any complicated construction.



### Superb Expandability and Flexibility

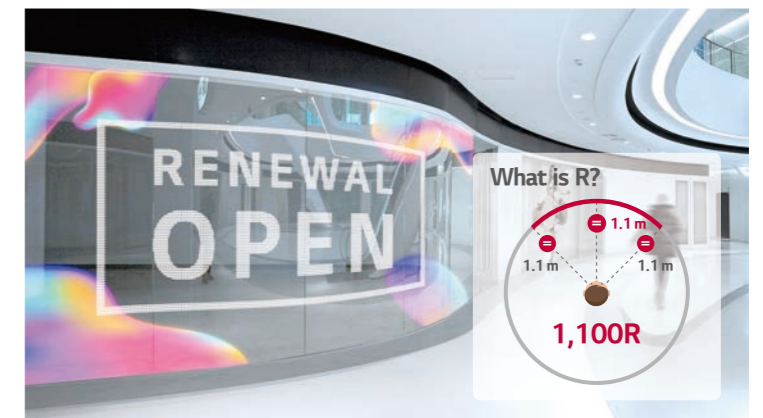
The size and layout of the film can be customized to fit to the installation area. It can be expanded by adding more films in a vertical or horizontal way, or cut in parallel with the bezel to meet size requirements.



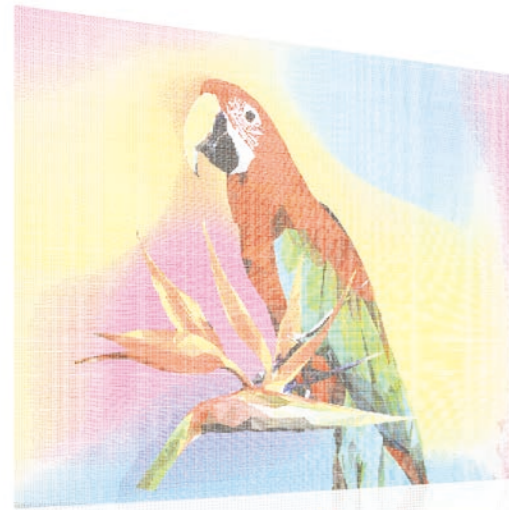
\* The film must be cut in parallel with the the bezel by 1 pixel.

### Curved Format Supported

The transparent LED film supports curvatures up to 1,100R convex and concave for curved glass or window applications. This allows a wider range of venues to be redesigned as a landmark.



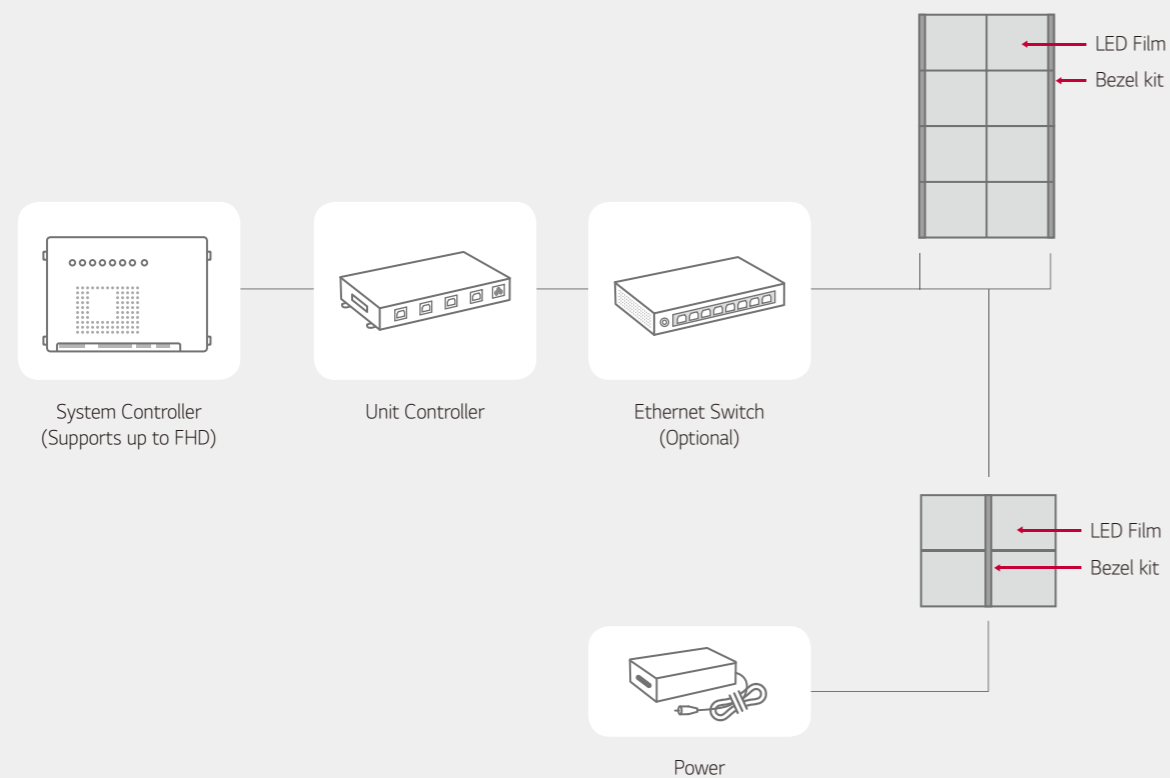
\* Models may vary by region. Check with local sales for availability.



**Color Transparent LED Film  
LAT240DT1**

- Pitch: 24 mm
- Transmittance: 73 %
- Brightness: >1,000 cd/m<sup>2</sup>
- Curvature (Convex & Concave): 1,100 R
- Self-adhesive film

**System Connection**



\* The actual system structure may be subject to change from the above example.

\* Specifications are subject to change without notice

**LAT240DT1**

Pitch	24 mm
LED Type	R, G, B 3in1 Color Package (SMD1818)
Resolution	28 × 20
Pixels per Panel	560
Pixel Density (point/m <sup>2</sup> )	1,736
Brightness	>1,000 cd/m <sup>2</sup>
Contrast Ratio	≥ 100,000:1
Luminance Uniformity	≥ 70%
Viewing Angle (H × V)	120 × 120
Life Time (Brightness 50%)	50,000 Hrs
Daily Usage	24 Hrs / 7 Days
Transmittance	73%
Operating Temperature	0 °C - 45 °C (Indoor Glass Installation Only)
Curved Installation	1,100R (Convex & Concave)
Film Trimming	Yes (Parallel to the Bezel Side Only)
Color Processing	130/120/110 Level (R, G, B)
Colors	1,716,000 Colors
Color Chromaticity	Cx: 0.28±0.03, Cy: 0.28±0.03
Dimension (W × H × D)	668 × 480 × 2.0 mm (with Front & Back Protection Film)
Weight	0.73 kg
Power Consumption	37 W (Transparent Panel 1ea, Bezel Kit 1ea)

1st Bezel Kit	ACC-LATB2	Common Bezel Kit	ACC-LATB3
Dimension (W × H × D)	547.3 × 63 × 24 mm	Dimension (W × H × D)	479.5 × 28.1 × 24 mm
Weight	0.45 kg	Weight	0.26 kg

Power (Bezel Kit & LED Film)	ACC-LATP1	Unit Controller	LCLG012U
Dimension (W × H × D)	183 × 86 × 28 mm	Resolution	960 × 540 (4 Unit Controllers Needed for FHD)
Weight	0.769 kg	Interface	LVDS In, RJ45 (4ea) Out
Input	100-240V, 50-60Hz	Maximum Transmission Length	100 m
Output	19.5V/10.8A (210W)	Dimension (W × H × D)	293 × 37 × 188.7 mm
Color	White	Weight	1.5 kg
DC Output Cable	14AWG, 1.5m	Power Consumption	20 W
		Accessories	Power Cord, LVDS MCX Cable, ESG, Regulation Book, Warranty Card

System Controller	LCLG002
Video	DP: 3,840 × 2,160 @30Hz / HDMI: 3,840 × 2,160 @30Hz / DVI-D: 1,920 × 1,080 @60Hz
Input	HDMI, DP, DVI-D, RS232C (Phone Jack Type), RJ45 (w/o LED Indicator), IR Receiver (for Installation), USB
Output	DP, RS232C, RJ45 (w/o LED Indicator), LVDS
Dimension (W × H × D)	293 × 40.1 × 193.3 mm
Weight (Head)	1.6 kg
Temperature Sensor	0
Light Sensor	0
Source Selection	HDMI, DVI-D, DP
TPC	Yes
Power Consumption	17 W
CMS S/W	Yes
Accessories	Power Cord, IR & Bright Sensor, 4P Phone-to-RS232C Gender, ESG, Regulation Book, Warranty Card



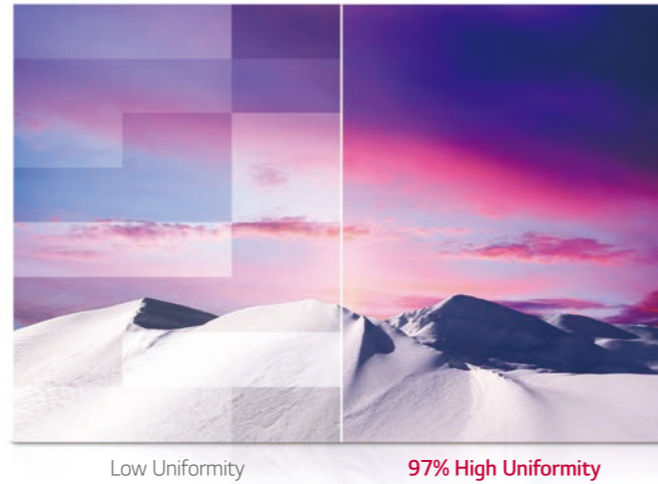
# INDOOR LED SIGNAGE

Achieving Superb Picture Quality with Various Designs

Full model line-up, ranging from the Premium Fine-pitch series to the Curved series, LG Indoor LED Signage provides a variety of customizable options to fit into whatever spaces you need it to.

### Uniform Picture Quality

Every step from production is strictly managed, while factory calibration ensures consistent quality between the LED units. The display provides seamless content with 97%\* brightness uniformity.



\* LAPE, LAAF series: 95%

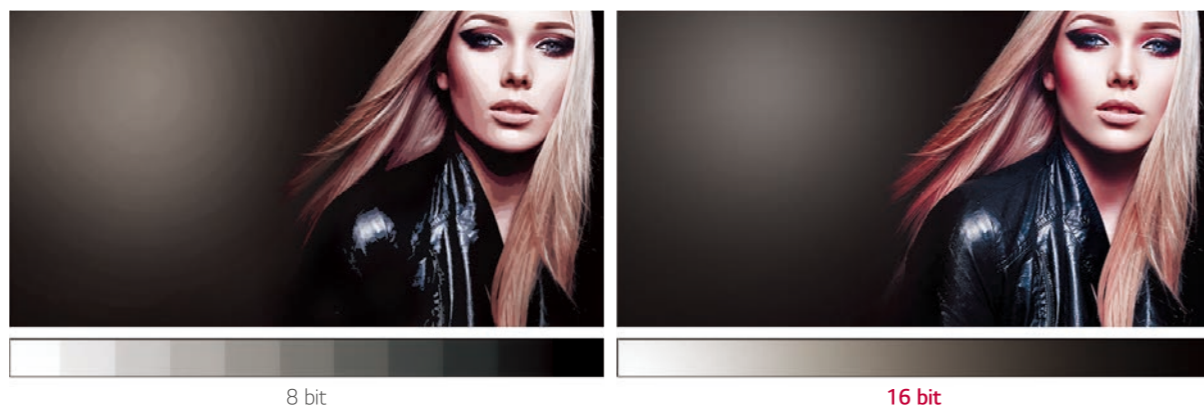
### Vividness with Color Accuracy

LG's rigorous quality standards also make LG LED signage reproduce accurate colors, vividly displaying the original colors of objects without distortion.



### 16-Bit Color Processing

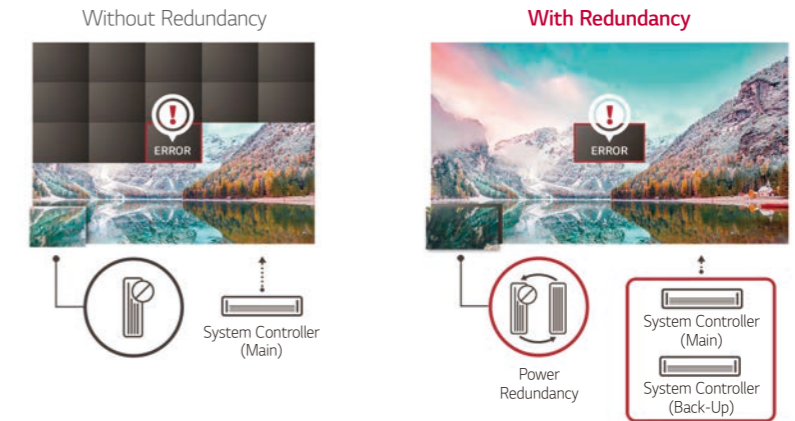
16-bit\* color processing provides a higher greyscale level, which seamlessly displays different depths and densities of colors without distortion, thereby giving a more realistic and sophisticated content.



\* Available for the LAP, LAPE, LAAF, LAS Fine-pitch series

### Reliable Operation with Signal/Power Redundancy

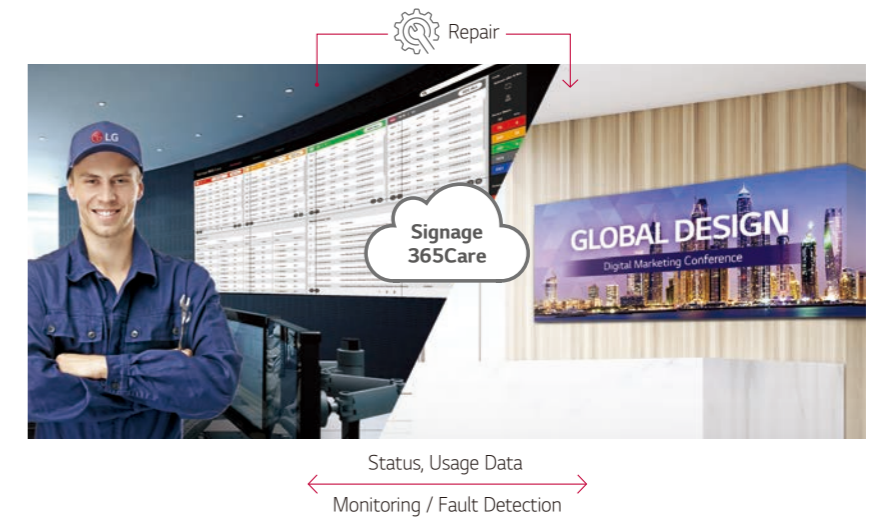
With an additional controller and power Unit, a back-up controller activates if a signal transmission error occurs, preventing a screen blackout error (Signal Redundancy\*). The product also offers Power Redundancy\*. Two power units are provided in every LED unit; one activates to provide power when the other fails.



\*Support may differ by model series

### Real-Time 365 Care Service

The maintenance gets easier and faster with an optional service Signage365Care\*, a cloud service solution provided by LG service. It remotely manages status of LED displays in client workplaces for fault diagnosis and remote-control services, ensuring the stable operation of a client's business.



\* The availability of Signage365Care service can differ by region, model series.

### RoHS Certified Safe Product

Boasting RoHS certification, all LG LED signage models are environmentally-friendly products that do not use materials harmful to the environment and people.



\* Models may vary by region. Check with local sales for availability.



Premium Fine-pitch  
**LAP/LAPE Series**

- Pixel pitch: 1.0 mm (LAP), 1.5 / 2.0 / 2.5 mm (LAPE)
- Brightness (After calibration): 1,000 cd/m<sup>2</sup>\*
- Serviceability: Front and rear (LAP: rear only)
- Curvatures: Concave/convex 1,000R (LAPE only)
- Available in two models (LAPE series): Remote power and embedded power.

\* Embedded power model: 700 cd/m<sup>2</sup>

130" Direct View LED Screen  
**LAAF Series**

- Pixel pitch: 1.5 mm
- Brightness (After calibration): 500 cd/m<sup>2</sup>
- 130" single-set design (FHD)
- Built-in controller and PSU (Power Supply Unit)
- Surface Sound



Fine-pitch  
**LAS Series**

- Pixel pitch: 1.26 / 1.454 / 1.575 / 1.89 / 2.52 mm
- Brightness (After calibration): 600 cd/m<sup>2</sup>
- Serviceability: Front
- Cableless installation



Standard  
**LAS Series**

- Pixel pitch: 2.5 / 3.9 mm
- Brightness (After calibration): 1,000 cd/m<sup>2</sup>
- Serviceability: Front
- Fast installation and teardown for rental solution

Standard  
**LAE / LAE-Q Series**

- Pixel Pitch: 2.97 / 3.91 mm (LAE), 2.6 / 3.91 mm (LAE-Q)
- Brightness (After calibration): 1,200 cd/m<sup>2</sup>
- Serviceability: Front or rear
- Simple locking system
- Fast installation and teardown for rental solution (LAE only)



Curved  
**LAC Series**

- Pixel pitch: 2.5 / 2.97 / 3.91 mm
- Brightness (After calibration): 1,200 cd/m<sup>2</sup>
- Serviceability: Front or rear
- Curvature: concave/convex 1,430R



\* Specifications are subject to change without notice.

		Premium Fine-pitch <b>LAP Series</b>
		LAP010BL2
Physical Parameters	Model Name	LAP010BL2
	Pixel Configuration	3 in 1 SMD
	Pixel Pitch (mm)	1.00
	Module Resolution (W × H)	192 × 180
	Module Dimensions(W × H, mm)	192 × 180
	Weight per Module (kg)	-
	No. of Modules per Unit Case (W × H)	2 × 2
	Unit Case Resolution (W × H)	384 × 360
	Unit Case Dimensions (W × H × D, mm)	384 × 360 × 77
	Unit Case Surface Area (m <sup>2</sup> )	0.138
	Weight per Unit Case (kg/unit)	5.0
	Weight per Square Meter (kg/m <sup>2</sup> )	36.2
	Physical Pixel Density (pixels/m <sup>2</sup> )	1,000,000
	Flatness of Unit Case (mm)	±0.2
	Unit Case Material	Die Casting Aluminum
Service Access	Rear	
Optical Specifications	Min. Brightness (After Calibration)	1,000 cd/m <sup>2</sup>
	Color Temperature	3,200 - 9,300
	Visual Viewing Angle (Horizontal)	160
	Visual Viewing Angle (Vertical)	140
	Brightness Uniformity	97%
	Color Uniformity	±0.015Cx,Cy
	Contrast Ratio	6,000
	Processing Depth (bit)	16
Electrical Specifications	Power Consumption (W/unit, Avg.)	79
	Power Consumption (W/unit, Max.)	170
	Power Consumption (W/m <sup>2</sup> , Max.)	1,230
	Power Supply (V)	100 to 240
Operation Specifications	Frame Rate (Hz)	50 / 60
	Refresh Rate (Hz)	1,920
	Lifetime (Half Brightness, hrs) <sup>1)</sup>	100,000
Certification	Operating Temperature (°C)	0°C to +40°C
	Operating Humidity	10-80%RH
Certification	Safety / EMC	IEC 60950-1 / EN 60950-1 / UL 60950-1, FCC Class A / CE / KC
Environment	Environment	RoHS
Controller		LCLG001
Connectivity (Controller)	Video Inputs	HDMI In, DP In/out, DVI, USB
	Control	RJ45 In/out, RS232C In/out
Optional Accessory	Special Features	Temperature Sensor, Ambient Light Sensor, Current Sensor

\* LED package with goldwire

1) The Lifetime(Half brightness) spec is subject to LED package spec.

\* Specifications are subject to change without notice.

		Premium Fine-pitch <b>LAPE Series</b>					
		Remote Power Model			Embedded Power Model		
		LAP015EL6B	LAP020EL6B	LAP025EL4D	LAP015EL6BP	LAP020EL6BP	LAP025EL4DP
		Model Name (LDM (LED Display Module))					
Physical Parameters	Pixel Configuration	3 in 1 SMD	3 in 1 SMD	3 in 1 SMD	3 in 1 SMD	3 in 1 SMD	3 in 1 SMD
	Pixel Pitch (mm)	1.50	2.00	2.50	1.50	2.00	2.50
	Module Resolution (W × H)	160 × 120	120 × 90	96 × 72	160 × 120	120 × 90	96 × 72
	Module Dimensions(W × H, mm)	240 × 180	240 × 180	240 × 180	240 × 180	240 × 180	240 × 180
	Weight per Module (kg)	0.36	0.36	0.36	0.36	0.36	0.36
	No. of Modules per Unit Case (W × H)	2 × 3	2 × 3	2 × 3	2 × 3	2 × 3	2 × 3
	Unit Case Resolution (W × H)	320 × 360	240 × 270	192 × 216	320 × 360	240 × 270	192 × 216
	Unit Case Dimensions (W × H × D, mm)	480 × 540 × 53	480 × 540 × 53	480 × 540 × 53	480 × 540 × 105	480 × 540 × 105	480 × 540 × 105
	Unit Case Surface Area (m <sup>2</sup> )	0.260	0.260	0.260	0.259	0.259	0.259
	Weight per Unit Case (kg/unit)	6.0	6.0	6.0	10.1	10.1	10.1
	Weight per Square Meter (kg/m <sup>2</sup> )	22.2	21.8	21.3	38.4	38.0	37.4
	Physical Pixel Density (pixels/m <sup>2</sup> )	444,444	250,000	160,000	444,444	250,000	160,000
	Flatness of Unit Case (mm)	±0.2	±0.2	±0.2	±0.2	±0.2	±0.2
	Unit Case Material	Die Casting Aluminum	Die Casting Aluminum	Die Casting Aluminum	Die Casting Aluminum	Die Casting Aluminum	Die Casting Aluminum
	Service Access	Front and Rear	Front and Rear	Front and Rear	Front and Rear	Front and Rear	Front and Rear
Optical Specifications	Min. Brightness (After Calibration)	1,000 <sup>1)</sup> cd/m <sup>2</sup>	1,000 <sup>1)</sup> cd/m <sup>2</sup>	1,000 <sup>1)</sup> cd/m <sup>2</sup>	700 cd/m <sup>2</sup>	700 cd/m <sup>2</sup>	700 cd/m <sup>2</sup>
	Color Temperature	3,200 - 9,300	3,200 - 9,300	3,200 - 9,300	3,200 - 9,300	3,200 - 9,300	3,200 - 9,300
	Visual Viewing Angle (Horizontal)	160	160	160	160	160	160
	Visual Viewing Angle (Vertical)	140	140	140	140	140	140
	Brightness Uniformity	95%	95%	95%	95%	95%	95%
	Color Uniformity	±0.015Cx,Cy	±0.015Cx,Cy	±0.015Cx,Cy	±0.015Cx,Cy	±0.015Cx,Cy	±0.015Cx,Cy
	Contrast Ratio	6,000	6,000	6,000	6,000	6,000	6,000
	Processing Depth (bit)	16 (HDR10)	16 (HDR10)	16 (HDR10)	16 (HDR10)	16 (HDR10)	16 (HDR10)
Electrical Specifications	Power Consumption (W/unit, Avg.)	165	165	120	125	125	90
	Power Consumption (W/unit, Max.)	330	330	240	250	250	180
	Power Consumption (W/m <sup>2</sup> , Max.)	1,275	1,275	930	965	965	700
	Power Supply (V)	100 to 240	100 to 240	100 to 240	100 to 240	100 to 240	100 to 240
	Frame Rate (Hz)	50 / 60	50 / 60	50 / 60	50 / 60	50 / 60	50 / 60
	Refresh Rate (Hz)	3,840	3,840	3,840	3,840	3,840	3,840
Operation Specifications	Lifetime (Half Brightness, hrs) <sup>2)</sup>	100,000	100,000	50,000	100,000	100,000	50,000
	Operating Temperature (°C)	0°C to +40°C	0°C to +40°C	0°C to +40°C	0°C to +40°C	0°C to +40°C	0°C to +40°C
Certification	Operating Humidity	10-80%RH	10-80%RH	10-80%RH	10-80%RH	10-80%RH	10-80%RH
	EMC	FCC Class A / CE / KC	FCC Class A / CE / KC	FCC Class A / CE / KC	FCC Class A / CE / KC	FCC Class A / CE / KC	FCC Class A / CE / KC
Environment	Environment	RoHS	RoHS	RoHS	RoHS	RoHS	RoHS
Controller		LCLG003	LCLG003	LCLG003	LCLG005	LCLG005	LCLG005
Connectivity (Controller)	Video Inputs	HDMI In, DP In, OPS In, USB			HDMI In, DP In, OPS In, USB		
	Control	RJ45 In, RS232C In/out			RJ45 In, RS232C In/out		
Optional Accessory	Special Features	HDR10, Temperature Sensor, Power Detection ADA Compliant, PSU Hot Swappable			HDR10, Temperature Sensor, Power Detection		
		ACC-LAPPC06(DC PSU Cable 6m), ACC-LAPPC60(DC PSU Cable 60m)			N/A		

\* LED package with goldwire

1) Brightness can be reduced (up to 300nit) by the number of PSU modules, thereby decreasing power consumption.

2) The Lifetime(Half brightness) spec is subject to LED package spec.

\* Specifications are subject to change without notice.

130" Direct View LED Screen  
**LAAF Series**

	Model Name	LAA015FL7B1
Physical Parameters	Pixel Configuration	3 in 1 SMD
	Pixel Pitch (mm)	1.50
	Module Resolution (W × H)	1,920 × 1,080
	Module Dimensions(W × H, mm)	2,880 × 1,620 × 128.5
	Weight per Module (kg)	175
	No. of Modules per Unit Case (W × H)	4 × 3
	Unit Case Resolution (W × H)	640 × 360
	Unit Case Dimensions (W × H × D, mm)	960 × 540 × 128.5
	Unit Case Surface Area (m <sup>2</sup> )	0.518
	Weight per Unit Case (kg/unit)	Master: 20.85, Slave: 19.24
	Weight per Square Meter (kg/m <sup>2</sup> )	37.6
	Physical Pixel Density (pixels/m <sup>2</sup> )	444,444
	Flatness of Unit Case (mm)	±0.2
	Unit Case Material	Front : Die Casting Aluminum, Rear : PC+ABS
	Service Access	Front and Rear
Optical Specifications	Min. Brightness (After Calibration)	500 cd/m <sup>2</sup>
	Color Temperature	6,500
	Visual Viewing Angle (Horizontal)	160
	Visual Viewing Angle (Vertical)	140
	Brightness Uniformity	95%
	Color Uniformity	±0.015Cx,Cy
	Contrast Ratio	5,000
	Processing Depth (bit)	16 (HDR10)
Electrical Specifications	Power Consumption (W/unit, Avg.)	1,765
	Power Consumption (W/unit, Max.)	3,530
	Power Consumption (W/m <sup>2</sup> , Max.)	760
	Power Supply (V)	100 to 240
	Frame Rate (Hz)	50 / 60
	Refresh Rate (Hz)	3,840
Operation Specifications	Lifetime (Half Brightness, hrs) <sup>1)</sup>	100,000
	Operating Temperature (°C)	0°C to +40°C
	Operating Humidity	10 - 80%RH
Certification	Safety / EMC	IEC 60950-1 / EN 60950-1 / UL 60950-1, FCC Class A / CE / KC
Environment	Environment	RoHS
Connectivity (Embedded Controller)	Video Inputs	HDMI In(3), DP In, USB
	Control	RJ45 In, RS232C In/out
	Special Features	Temperature Sensor, Ambient Light Sensor, Crestron Connected <sup>2)</sup>
Basic Accessory		Data Cable, LAN Cable, Power Cord, RS232C Gender (9pin to Phone Jack), Remote Controller, IR Receiver, Manual

\* LED package with goldwire  
1) The Lifetime(Half brightness) spec is subject to LED package spec.  
2) Network based control

\* Specifications are subject to change without notice.

Fine-pitch  
**LAS Series**

	Model Name	LAS012DB2-F	LAS012DB4-F	LAS012DB7-F	LAS014DB2-F	LAS014DB4-F
Physical Parameters	Pixel Configuration	3 in 1 SMD	3 in 1 SMD	3 in 1 SMD	3 in 1 SMD	3 in 1 SMD
	Pixel Pitch (mm)	1.26	1.26	1.26	1.454	1.454
	Module Resolution (W × H)	240 × 135	240 × 135	240 × 135	208 × 117	208 × 117
	Module Dimensions (W × H, mm)	302.4 × 170.1	302.4 × 170.1	302.4 × 170.1	302.4 × 170.1	302.4 × 170.1
	Weight per Module (kg)	0.52	0.52	0.52	0.52	0.52
	No. of Modules per Unit Case (W × H)	2 × 2	2 × 2	2 × 2	2 × 2	2 × 2
	Unit Case Resolution (W × H)	480 × 270	480 × 270	480 × 270	416 × 234	416 × 234
	Unit Case Dimensions (W × H × D, mm)	604.8 × 340.2 × 72.5	604.8 × 340.2 × 72.5	604.8 × 340.2 × 72.5	604.8 × 340.2 × 72.5	604.8 × 340.2 × 72.5
	Unit Case Surface Area (m <sup>2</sup> )	0.206	0.206	0.206	0.206	0.206
	Weight per Unit Case (kg/unit)	5.2	5.2	5.2	5.2	5.2
	Weight per Square Meter (kg/m <sup>2</sup> )	26.0	26.0	26.0	26.0	26.0
	Physical Pixel Density (pixels/m <sup>2</sup> )	629,882	629,882	629,882	473,111	473,111
	Flatness of Unit Case (mm)	±0.5	±0.5	±0.5	±0.5	±0.5
	Unit Case Material	Die Casting Magnesium	Die Casting Magnesium	Die Casting Magnesium	Die Casting Magnesium	Die Casting Magnesium
	Service Access	Front	Front	Front	Front	Front
Optical Specifications	Brightness (After Calibration)	600 cd/m <sup>2</sup>	600 cd/m <sup>2</sup>	600 cd/m <sup>2</sup>	600 cd/m <sup>2</sup>	600 cd/m <sup>2</sup>
	Color Temperature	3,000 - 10,000	3,000 - 10,000	3,000 - 10,000	3,000 - 10,000	3,000 - 10,000
	Viewing Angle (H × V)	160 × 140	160 × 140	160 × 140	160 × 140	160 × 140
	Brightness Uniformity	97%	97%	97%	97%	97%
	Color Uniformity	±0.003Cx,Cy	±0.003Cx,Cy	±0.003Cx,Cy	±0.003Cx,Cy	±0.003Cx,Cy
	Contrast Ratio	7,000	7,000	7,000	7,000	7,000
	Processing Depth (bit)	16	16	16	16	16
	Power Consumption (W/unit, Avg.)	54	54	54	54	54
Electrical Specifications	Power Consumption (W/unit, Max.)	180	180	180	180	180
	Power Consumption (W/m <sup>2</sup> , Max.)	874	874	874	874	874
	Power Supply (V)	100 to 240	100 to 240	100 to 240	100 to 240	100 to 240
	Frame Rate (Hz)	50 / 60	50 / 60	50 / 60	50 / 60	50 / 60
	Refresh Rate (Hz)	3,000	3,000	3,000	3,000	3,000
	Lifetime (Half Brightness, hrs) <sup>1)</sup>	100,000	50,000	100,000	100,000	50,000
Operation Specifications	Operating Temperature (°C)	-10°C to +40°C	-10°C to +40°C	-10°C to +40°C	-10°C to +40°C	-10°C to +40°C
	Operating Humidity	10 - 80%RH	10 - 80%RH	10 - 80%RH	10 - 80%RH	10 - 80%RH
	Safety	IEC 60950-1 / EN 60950-1 / UL 60950-1	IEC 60950-1 / EN 60950-1 / UL 60950-1	IEC 60950-1 / EN 60950-1 / UL 60950-1	IEC 60950-1 / EN 60950-1 / UL 60950-1	IEC 60950-1 / EN 60950-1 / UL 60950-1
Certification	EMC	FCC Class "A" / CE / KC	FCC Class "A" / CE / KC	FCC Class "A" / CE / KC	FCC Class "A" / CE / KC	FCC Class "A" / CE / KC
	Environment	RoHS	RoHS	RoHS	RoHS	RoHS
	Controller	LCLY006HD	LCLY006HD	LCLY006HD	LCLY006HD	LCLY006HD

\* LED package with goldwire  
1) The Lifetime(Half Brightness) spec is subject to LED package spec.

\* Specifications are subject to change without notice.

		Fine-pitch <b>LAS Series</b>					
		Model Name	LAS014DB7-F	LAS015DB2-F	LAS015DB4-F	LAS015DB7-F	LAS018DB2-F
Physical Parameters	Pixel Configuration		3 in 1 SMD	3 in 1 SMD	3 in 1 SMD	3 in 1 SMD	3 in 1 SMD
	Pixel Pitch (mm)		1.454	1.575	1.575	1.575	1.89
	Module Resolution (W × H)		208 × 117	192 × 108	192 × 108	192 × 108	160 × 90
	Module Dimensions (W × H, mm)		302.4 × 170.1	302.4 × 170.1	302.4 × 170.1	302.4 × 170.1	302.4 × 170.1
	Weight per Module (kg)		0.52	0.52	0.52	0.52	0.52
	No. of Modules per Unit Case (W × H)		2 × 2	2 × 2	2 × 2	2 × 2	2 × 2
	Unit Case Resolution (W × H)		416 × 234	384 × 216	384 × 216	384 × 216	320 × 180
	Unit Case Dimensions (W × H × D, mm)		604.8 × 340.2 × 72.5	604.8 × 340.2 × 72.5	604.8 × 340.2 × 72.5	604.8 × 340.2 × 72.5	604.8 × 340.2 × 72.5
	Unit Case Surface Area (m <sup>2</sup> )		0.206	0.206	0.206	0.206	0.206
	Weight per Unit Case (kg/unit)		5.2	5.2	5.2	5.2	5.2
	Weight per Square Meter (kg/m <sup>2</sup> )		26.0	26.0	26.0	26.0	26.0
	Physical Pixel Density (pixels/m <sup>2</sup> )		473,111	403,124	403,124	403,124	279,947
	Flatness of Unit Case (mm)		±0.5	±0.5	±0.5	±0.5	±0.5
	Unit Case Material		Die Casting Magnesium	Die Casting Magnesium	Die Casting Magnesium	Die Casting Magnesium	Die Casting Magnesium
	Service Access		Front	Front	Front	Front	Front
Optical Specifications	Brightness (After Calibration)		600 cd/m <sup>2</sup>	600 cd/m <sup>2</sup>	600 cd/m <sup>2</sup>	600 cd/m <sup>2</sup>	600 cd/m <sup>2</sup>
	Color Temperature		3,000 - 10,000	3,000 - 10,000	3,000 - 10,000	3,000 - 10,000	3,000 - 10,000
	Viewing Angle (H × V)		160 × 140	160 × 140	160 × 140	160 × 140	160 × 140
	Brightness Uniformity		97%	97%	97%	97%	97%
	Color Uniformity		±0.003Cx,Cy	±0.003Cx,Cy	±0.003Cx,Cy	±0.003Cx,Cy	±0.003Cx,Cy
	Contrast Ratio		7,000	7,000	7,000	7,000	7,000
	Processing Depth (bit)		16	16	16	16	16
Electrical Specifications	Power Consumption (W/unit, Avg.)		54	54	54	54	54
	Power Consumption (W/unit, Max.)		180	180	180	180	180
	Power Consumption (W/m <sup>2</sup> , Max.)		874	874	874	874	874
	Power Supply (V)		100 to 240	100 to 240	100 to 240	100 to 240	100 to 240
	Frame Rate (Hz)		50 / 60	50 / 60	50 / 60	50 / 60	50 / 60
	Refresh Rate (Hz)		3,000	3,000	3,000	3,000	3,000
Operation Specifications	Lifetime (Half Brightness, hrs) <sup>1)</sup>		100,000	100,000	50,000	100,000	100,000
	Operating Temperature (°C)		-10°C to +40°C	-10°C to +40°C	-10°C to +40°C	-10°C to +40°C	-10°C to +40°C
	Operating Humidity		10 - 80%RH	10 - 80%RH	10 - 80%RH	10 - 80%RH	10 - 80%RH
Certification	Safety		IEC 60950-1 / EN 60950-1 / UL 60950-1	IEC 60950-1 / EN 60950-1 / UL 60950-1	IEC 60950-1 / EN 60950-1 / UL 60950-1	IEC 60950-1 / EN 60950-1 / UL 60950-1	IEC 60950-1 / EN 60950-1 / UL 60950-1
	EMC		FCC Class "A" / CE / KC	FCC Class "A" / CE / KC	FCC Class "A" / CE / KC	FCC Class "A" / CE / KC	FCC Class "A" / CE / KC
	Environment		RoHS	RoHS	RoHS	RoHS	RoHS
Controller		LCLY006HD	LCLY006HD	LCLY006HD	LCLY006HD	LCLY006HD	

\* LED package with goldwire

1) The Lifetime(Half Brightness) spec is subject to LED package spec.

\* Specifications are subject to change without notice.

		Fine-pitch <b>LAS Series</b>					
		Model Name	LAS018DB4-F	LAS018DB7-F	LAS025DB2-F	LAS025DB4-F	LAS025DB7-F
Physical Parameters	Pixel Configuration		3 in 1 SMD	3 in 1 SMD	3 in 1 SMD	3 in 1 SMD	3 in 1 SMD
	Pixel Pitch (mm)		1.89	1.89	2.52	2.52	2.52
	Module Resolution (W × H)		160 × 90	160 × 90	120 × 68	120 × 68	120 × 68
	Module Dimensions (W × H, mm)		302.4 × 170.1	302.4 × 170.1	302.4 × 170.1	302.4 × 170.1	302.4 × 170.1
	Weight per Module (kg)		0.52	0.52	0.52	0.52	0.52
	No. of Modules per Unit Case (W × H)		2 × 2	2 × 2	2 × 2	2 × 2	2 × 2
	Unit Case Resolution (W × H)		320 × 180	320 × 180	240 × 136	240 × 136	240 × 136
	Unit Case Dimensions (W × H × D, mm)		604.8 × 340.2 × 72.5	604.8 × 340.2 × 72.5	604.8 × 340.2 × 72.5	604.8 × 340.2 × 72.5	604.8 × 340.2 × 72.5
	Unit Case Surface Area (m <sup>2</sup> )		0.206	0.206	0.206	0.206	0.206
	Weight per Unit Case (kg/unit)		5.2	5.2	5.2	5.2	5.2
	Weight per Square Meter (kg/m <sup>2</sup> )		26.0	26.0	26.0	26.0	26.0
	Physical Pixel Density (pixels/m <sup>2</sup> )		279,947	279,947	158,637	158,637	158,637
	Flatness of Unit Case (mm)		±0.5	±0.5	±0.5	±0.5	±0.5
	Unit Case Material		Die Casting Magnesium	Die Casting Magnesium	Die Casting Magnesium	Die Casting Magnesium	Die Casting Magnesium
	Service Access		Front	Front	Front	Front	Front
Optical Specifications	Brightness (After Calibration)		600 cd/m <sup>2</sup>	600 cd/m <sup>2</sup>	600 cd/m <sup>2</sup>	600 cd/m <sup>2</sup>	600 cd/m <sup>2</sup>
	Color Temperature		3,000 - 10,000	3,000 - 10,000	3,000 - 10,000	3,000 - 10,000	3,000 - 10,000
	Viewing Angle (H × V)		160 × 140	160 × 140	160 × 140	160 × 140	160 × 140
	Brightness Uniformity		97%	97%	97%	97%	97%
	Color Uniformity		±0.003Cx,Cy	±0.003Cx,Cy	±0.003Cx,Cy	±0.003Cx,Cy	±0.003Cx,Cy
	Contrast Ratio		7,000	7,000	7,000	7,000	7,000
	Processing Depth (bit)		16	16	16	16	16
Electrical Specifications	Power Consumption (W/unit, Avg.)		54	54	54	54	54
	Power Consumption (W/unit, Max.)		180	180	180	180	180
	Power Consumption (W/m <sup>2</sup> , Max.)		874	874	874	874	874
	Power Supply (V)		100 to 240	100 to 240	100 to 240	100 to 240	100 to 240
	Frame Rate (Hz)		50 / 60	50 / 60	50 / 60	50 / 60	50 / 60
	Refresh Rate (Hz)		3,000	3,000	3,000	3,000	3,000
Operation Specifications	Lifetime (Half Brightness, hrs) <sup>1)</sup>		50,000	100,000	100,000	50,000	100,000
	Operating Temperature (°C)		-10°C to +40°C	-10°C to +40°C	-10°C to +40°C	-10°C to +40°C	-10°C to +40°C
	Operating Humidity		10 - 80%RH	10 - 80%RH	10 - 80%RH	10 - 80%RH	10 - 80%RH
Certification	Safety		IEC 60950-1 / EN 60950-1 / UL 60950-1	IEC 60950-1 / EN 60950-1 / UL 60950-1	IEC 60950-1 / EN 60950-1 / UL 60950-1	IEC 60950-1 / EN 60950-1 / UL 60950-1	IEC 60950-1 / EN 60950-1 / UL 60950-1
	EMC		FCC Class "A" / CE / KC	FCC Class "A" / CE / KC	FCC Class "A" / CE / KC	FCC Class "A" / CE / KC	FCC Class "A" / CE / KC
	Environment		RoHS	RoHS	RoHS	RoHS	RoHS
Controller		LCLY006HD	LCLY006HD	LCLY006HD	LCLY006HD	LCLY006HD	

\* LED package with goldwire

1) The Lifetime(Half Brightness) spec is subject to LED package spec.

\* Specifications are subject to change without notice.

		Standard <b>LAS Series</b>				
		Model Name	LAS025DB4-V	LAS025DB7-V	LAS039DB4-V	LAS039DB7-V
Physical Parameters	Pixel Configuration		3 in 1 SMD	3 in 1 SMD	3 in 1 SMD	3 in 1 SMD
	Pixel Pitch (mm)		2.50	2.50	3.90	3.90
	Module Resolution (W × H)		100 × 100	100 × 100	64 × 64	64 × 64
	Module Dimensions (W × H, mm)		250 × 250	250 × 250	250 × 250	250 × 250
	Weight per Module (kg)		0.54	0.54	0.54	0.54
	No. of Modules per Unit Case (W × H)		2 × 2	2 × 2	2 × 2	2 × 2
	Unit Case Resolution (W × H)		200 × 200	200 × 200	128 × 128	128 × 128
	Unit Case Dimensions (W × H × D, mm)		500 × 500 × 74	500 × 500 × 74	500 × 500 × 74	500 × 500 × 74
	Unit Case Surface Area (m <sup>2</sup> )		0.250	0.250	0.250	0.250
	Weight per Unit Case (kg/unit)		7.0	7.0	7.0	7.0
	Weight per Square Meter (kg/m <sup>2</sup> )		28.0	28.0	28.0	28.0
	Physical Pixel Density (pixels/m <sup>2</sup> )		160,000	160,000	65,536	65,536
	Flatness of Unit Case (mm)		±0.5	±0.5	±0.5	±0.5
	Unit Case Material		Die Casting Magnesium	Die Casting Magnesium	Die Casting Magnesium	Die Casting Magnesium
Service Access		Front	Front	Front	Front	
Optical Specifications	Brightness (After Calibration)		1,000 cd/m <sup>2</sup>	1,000 cd/m <sup>2</sup>	1,000 cd/m <sup>2</sup>	1,000 cd/m <sup>2</sup>
	Color Temperature		3,000 - 10,000	3,000 - 10,000	3,000 - 10,000	3,000 - 10,000
	Viewing Angle (H × V)		160 × 140	160 × 140	160 × 140	160 × 140
	Brightness Uniformity		97%	97%	97%	97%
	Color Uniformity		±0.003Cx,Cy	±0.003Cx,Cy	±0.003Cx,Cy	±0.003Cx,Cy
	Contrast Ratio		8,000	8,000	8,000	8,000
	Processing Depth (bit)		16	16	16	16
Electrical Specifications	Power Consumption (W/unit, Avg.)		95	95	95	95
	Power Consumption (W/unit, Max.)		188	188	188	188
	Power Consumption (W/m <sup>2</sup> , Max.)		750	750	750	750
	Power Supply (V)		100 to 240	100 to 240	100 to 240	100 to 240
	Frame Rate (Hz)		50 / 60	50 / 60	50 / 60	50 / 60
Refresh Rate (Hz)		3,000	3,000	3,000	3,000	
Operation Specifications	Lifetime (Half Brightness, hrs) <sup>1)</sup>		50,000	50,000	80,000	80,000
	Operating Temperature (°C)		-10°C to +40°C	-10°C to +40°C	-10°C to +40°C	-10°C to +40°C
	Operating Humidity		10 - 80%RH	10 - 80%RH	10 - 80%RH	10 - 80%RH
	IP rating Front		IP30	IP30	IP30	IP30
IP rating Rear		IP30	IP30	IP30	IP30	
Certification	Safety		IEC 60950-1 / EN 60950-1 / UL 60950-1	IEC 60950-1 / EN 60950-1 / UL 60950-1	IEC 60950-1 / EN 60950-1 / UL 60950-1	IEC 60950-1 / EN 60950-1 / UL 60950-1
	EMC		FCC Class "A" / CE / KC	FCC Class "A" / CE / KC	FCC Class "A" / CE / KC	FCC Class "A" / CE / KC
	Environment		RoHS	RoHS	RoHS	RoHS
Controller		LCLY006HD	LCLY006HD	LCLY006HD	LCLY006HD	

\* LED package with goldwire

1) The Lifetime(Half Brightness) spec is subject to LED package spec.

\* Specifications are subject to change without notice.

		Standard <b>LAE Series</b>				
		Model Name	LAE029DD3DE	LAE029DD3E	LAE029DD4DE	LAE029DD4E
Physical Parameters	Pixel Configuration		3 in 1 SMD	3 in 1 SMD	3 in 1 SMD	3 in 1 SMD
	Pixel Pitch (mm)		2.97	2.97	2.97	2.97
	Module Resolution (W × H)		84 × 168	84 × 168	84 × 168	84 × 168
	Module Dimensions (W × H, mm)		250 × 500	250 × 500	250 × 500	250 × 500
	Weight per Module (kg)		1.20	1.20	1.20	1.20
	No. of Modules per Unit Case (W × H)		2 × 1	2 × 2	2 × 1	2 × 2
	Unit Case Resolution (W × H)		168 × 168	168 × 336	168x168	168 × 336
	Unit Case Dimensions (W × H × D, mm)		500 × 500 × 68	500 × 1,000 × 68	500 × 500 × 68	500 × 1,000 × 68
	Unit Case Surface Area (m <sup>2</sup> )		0.250	0.500	0.250	0.500
	Weight per Unit Case (kg/unit)		10.0	15.5	10.0	15.5
	Weight per Square Meter (kg/m <sup>2</sup> )		40.0	31.0	40.0	31.0
	Physical Pixel Density (pixels/m <sup>2</sup> )		112,896	112,896	112,896	112,896
	Flatness of Unit Case (mm)		±0.3	±0.3	±0.3	±0.3
	Unit Case Material		Die Casting Aluminum	Die Casting Aluminum	Die Casting Aluminum	Die Casting Aluminum
Service Access		Front or Rear	Front or Rear	Front or Rear	Front or Rear	
Optical Specifications	Brightness (After Calibration)		1,200 cd/m <sup>2</sup>	1,200 cd/m <sup>2</sup>	1,200 cd/m <sup>2</sup>	1,200 cd/m <sup>2</sup>
	Color Temperature		6,500	6,500	6,500	6,500
	Viewing Angle (H × V)		160 × 160	160 × 160	160 × 160	160 × 160
	Brightness Uniformity		97%	97%	97%	97%
	Color Uniformity		±0.003Cx,Cy	±0.003Cx,Cy	±0.003Cx,Cy	±0.003Cx,Cy
	Contrast Ratio		5,000	5,000	5,000	5,000
	Processing Depth (bit)		13	13	13	13
Electrical Specifications	Power Consumption (W/unit, Avg.)		53	110	53	110
	Power Consumption (W/unit, Max.)		160	330	160	330
	Power Consumption (W/m <sup>2</sup> , Max.)		640	660	640	660
	Power Supply (V)		100 to 240	100 to 240	100 to 240	100 to 240
	Frame Rate (Hz)		50 / 60	50 / 60	50 / 60	50 / 60
Refresh Rate (Hz)		1,920	1,920	1,920	1,920	
Operation Specifications	Lifetime (Half Brightness, hrs) <sup>1)</sup>		80,000	80,000	50,000	50,000
	Operating Temperature (°C)		-10°C to +45°C	-10°C to +45°C	-10°C to +45°C	-10°C to +45°C
	Operating Humidity		0 - 80%RH	0 - 80%RH	0 - 80%RH	0 - 80%RH
	IP rating Front		IP30	IP30	IP30	IP30
IP rating Rear		IP30	IP30	IP30	IP30	
Certification	Safety		IEC 60950-1 / EN 60950-1 / UL 60950-1	IEC 60950-1 / EN 60950-1 / UL 60950-1	IEC 60950-1 / EN 60950-1 / UL 60950-1	IEC 60950-1 / EN 60950-1 / UL 60950-1
	EMC		FCC Class "A" / CE / KC	FCC Class "A" / CE / KC	FCC Class "A" / CE / KC	FCC Class "A" / CE / KC
	Environment		RoHS	RoHS	RoHS	RoHS
Controller		LCIN006	LCIN006	LCIN006	LCIN006	

\* LED package with goldwire

1) The Lifetime(Half Brightness) spec is subject to LED package spec.

\* Specifications are subject to change without notice.

Standard  
**LAE Series**

	Model Name	LAE039DD3D	LAE039DD3	LAE039DD4D	LAE039DD4
Physical Parameters	Pixel Configuration	3 in 1 SMD	3 in 1 SMD	3 in 1 SMD	3 in 1 SMD
	Pixel Pitch (mm)	3.91	3.91	3.91	3.91
	Module Resolution (W × H)	64 × 128	64 × 128	64 × 128	64 × 128
	Module Dimensions (W × H, mm)	250 × 500	250 × 500	250 × 500	250 × 500
	Weight per Module (kg)	1.20	1.20	1.20	1.20
	No. of Modules per Unit Case (W × H)	2 × 1	2 × 2	2 × 1	2 × 2
	Unit Case Resolution (W × H)	128 × 128	128 × 256	128 × 128	128 × 256
	Unit Case Dimensions (W × H × D, mm)	500 × 500 × 68	500 × 1,000 × 68	500 × 500 × 68	500 × 1,000 × 68
	Unit Case Surface Area (m <sup>2</sup> )	0.250	0.500	0.250	0.500
	Weight per Unit Case (kg/unit)	8.2	12.5	8.2	12.5
	Weight per Square Meter (kg/m <sup>2</sup> )	32.8	25.0	32.8	25.8
	Physical Pixel Density (pixels/m <sup>2</sup> )	65,536	65,536	65,536	65,536
	Flatness of Unit Case (mm)	±0.3	±0.3	±0.3	±0.3
	Unit Case Material	Die Casting Magnesium	Die Casting Magnesium	Die Casting Magnesium	Die Casting Magnesium
	Service Access	Front or Rear	Front or Rear	Front or Rear	Front or Rear
Optical Specifications	Brightness (After Calibration)	1,200 cd/m <sup>2</sup>	1,200 cd/m <sup>2</sup>	1,200 cd/m <sup>2</sup>	1,200 cd/m <sup>2</sup>
	Color Temperature	6,500	6,500	6,500	6,500
	Viewing Angle (H × V)	160 × 160	160 × 160	160 × 160	160 × 160
	Brightness Uniformity	97%	97%	97%	97%
	Color Uniformity	±0.003Cx,Cy	±0.003Cx,Cy	±0.003Cx,Cy	±0.003Cx,Cy
	Contrast Ratio	5,000	5,000	5,000	5,000
	Processing Depth (bit)	14	14	14	14
Electrical Specifications	Power Consumption (W/unit, Avg.)	53	110	53	110
	Power Consumption (W/unit, Max.)	160	330	160	330
	Power Consumption (W/m <sup>2</sup> , Max.)	640	660	640	660
	Power Supply (V)	100 to 240	100 to 240	100 to 240	100 to 240
	Frame Rate (Hz)	50 / 60	50 / 60	50 / 60	50 / 60
	Refresh Rate (Hz)	3,840	3,840	3,840	3,840
Operation Specifications	Lifetime (Half Brightness, hrs) <sup>1)</sup>	80,000	80,000	50,000	50,000
	Operating Temperature (°C)	-10°C to +45°C	-10°C to +45°C	-10°C to +45°C	-10°C to +45°C
	Operating Humidity	0 - 80%RH	0 - 80%RH	0 - 80%RH	0 - 80%RH
	IP rating Front	IP30	IP30	IP30	IP30
	IP rating Rear	IP30	IP30	IP30	IP30
Certification	Safety	IEC 60950-1 / EN 60950-1 / UL 60950-1	IEC 60950-1 / EN 60950-1 / UL 60950-1	IEC 60950-1 / EN 60950-1 / UL 60950-1	IEC 60950-1 / EN 60950-1 / UL 60950-1
	EMC	FCC Class "A" / CE / KC	FCC Class "A" / CE / KC	FCC Class "A" / CE / KC	FCC Class "A" / CE / KC
	Environment	RoHS	RoHS	RoHS	RoHS
Controller		LCIN006	LCIN006	LCIN006	LCIN006

\* LED package with goldwire

1) The Lifetime(Half Brightness) spec is subject to LED package spec.

\* Specifications are subject to change without notice.

Standard  
**LAE-Q Series**

	Model Name	LAE026DD3-Q	LAE026DD4-Q	LAE039DD3-Q	LAE039DD4-Q
Physical Parameters	Pixel Configuration	3 in 1 SMD	3 in 1 SMD	3 in 1 SMD	3 in 1 SMD
	Pixel Pitch (mm)	2.60	2.60	3.91	3.91
	Module Resolution (W × H)	192 × 48	192 × 48	128 × 32	128 × 32
	Module Dimensions (W × H, mm)	500 × 125	500 × 125	500 × 125	500 × 125
	Weight per Module (kg)	0.71	0.71	0.71	0.71
	No. of Modules per Unit Case (W × H)	1 × 4	1 × 4	1 × 4	1 × 4
	Unit Case Resolution (W × H)	192 × 192	192 × 192	128 × 128	128 × 128
	Unit Case Dimensions (W × H × D, mm)	500 × 500 × 81	500 × 500 × 81	500 × 500 × 81	500 × 500 × 81
	Unit Case Surface Area (m <sup>2</sup> )	0.250	0.250	0.250	0.250
	Weight per Unit Case (kg/unit)	7.5	7.5	7.5	7.5
	Weight per Square Meter (kg/m <sup>2</sup> )	30.0	30.0	30.0	30.0
	Physical Pixel Density (pixels/m <sup>2</sup> )	147,456	147,456	65,536	65,536
	Flatness of Unit Case (mm)	±0.3	±0.3	±0.3	±0.3
	Unit Case Material	Die Casting Aluminum	Die Casting Aluminum	Die Casting Aluminum	Die Casting Aluminum
	Service Access	Front or Rear	Front or Rear	Front or Rear	Front or Rear
Optical Specifications	Brightness (After Calibration)	1,200 cd/m <sup>2</sup>	1,200 cd/m <sup>2</sup>	1,200 cd/m <sup>2</sup>	1,200 cd/m <sup>2</sup>
	Color Temperature	6,500	6,500	6,500	6,500
	Viewing Angle (H × V)	160 × 160	160 × 160	160 × 160	160 × 160
	Brightness Uniformity	97%	97%	97%	97%
	Color Uniformity	±0.003Cx,Cy	±0.003Cx,Cy	±0.003Cx,Cy	±0.003Cx,Cy
	Contrast Ratio	5,000	5,000	5,000	5,000
	Processing Depth (bit)	13	13	14	14
Electrical Specifications	Power Consumption (W/unit, Avg.)	56	56	56	56
	Power Consumption (W/unit, Max.)	168	168	168	168
	Power Consumption (W/m <sup>2</sup> , Max.)	672	672	672	672
	Power Supply (V)	100 to 240	100 to 240	100 to 240	100 to 240
	Frame Rate (Hz)	50 / 60	50 / 60	50 / 60	50 / 60
	Refresh Rate (Hz)	1,920	1,920	3,840	3,840
Operation Specifications	Lifetime (Half Brightness, hrs) <sup>1)</sup>	80,000	50,000	80,000	50,000
	Operating Temperature (°C)	-10°C to +45°C	-10°C to +45°C	-10°C to +45°C	-10°C to +45°C
	Operating Humidity	0 - 80%RH	0 - 80%RH	0 - 80%RH	0 - 80%RH
	IP rating Front	IP30	IP30	IP30	IP30
	IP rating Rear	IP30	IP30	IP30	IP30
Certification	Safety	IEC 60950-1 / EN 60950-1 / UL 60950-1	IEC 60950-1 / EN 60950-1 / UL 60950-1	IEC 60950-1 / EN 60950-1 / UL 60950-1	IEC 60950-1 / EN 60950-1 / UL 60950-1
	EMC	FCC Class "A" / CE / KC	FCC Class "A" / CE / KC	FCC Class "A" / CE / KC	FCC Class "A" / CE / KC
	Environment	RoHS	RoHS	RoHS	RoHS
Controller		LCIN006	LCIN006	LCIN006	LCIN006

\* LED package with goldwire

1) The Lifetime(Half Brightness) spec is subject to LED package spec.

\* Specifications are subject to change without notice.

Curved <b>LAC Series</b>				
	Model Name	LAC025DD3	LAC025DD4	LAC029DD3
Physical Parameters	Pixel Configuration	3 in 1 SMD	3 in 1 SMD	3 in 1 SMD
	Pixel Pitch (mm)	2.50	2.50	2.97
	Module Resolution (W × H)	200 × 50	200 × 50	168 × 42
	Module Dimensions (W × H, mm)	500 × 125	500 × 125	500 × 125
	Weight per Module (kg)	1.00	1.00	1.00
	No. of Modules per Unit Case (W × H)	1 × 4	1 × 4	1 × 4
	Unit Case Resolution (W × H)	200 × 200	200 × 200	168 × 168
	Unit Case Dimensions (W × H × D, mm)	500 × 500 × 84	500 × 500 × 84	500 × 500 × 84
	Unit Case Surface Area (m <sup>2</sup> )	0.250	0.250	0.250
	Weight per Unit Case (kg/unit)	8.9	8.9	8.9
	Weight per Square Meter (kg/m <sup>2</sup> )	35.6	35.6	35.6
	Physical Pixel Density (pixels/m <sup>2</sup> )	160,000	160,000	112,896
	Flatness of Unit Case (mm)	±0.3	±0.3	±0.3
	Unit Case Material	Die Casting Aluminum	Die Casting Aluminum	Die Casting Aluminum
	Service Access	Front or Rear	Front or Rear	Front or Rear
Optical Specifications	Brightness (After Calibration)	1,200 cd/m <sup>2</sup>	1,200 cd/m <sup>2</sup>	1,200 cd/m <sup>2</sup>
	Color Temperature	6,500	6,500	6,500
	Viewing Angle (H × V)	160 × 160	160 × 160	160 × 160
	Brightness Uniformity	97%	97%	97%
	Color Uniformity	±0.003Cx,Cy	±0.003Cx,Cy	±0.003Cx,Cy
	Contrast Ratio	5,000	5,000	5,000
	Processing Depth (bit)	13	13	13
Electrical Specifications	Power Consumption (W/unit, Avg.)	50	50	50
	Power Consumption (W/unit, Max.)	150	150	150
	Power Consumption (W/m <sup>2</sup> , Max.)	600	600	600
	Power Supply (V)	100 to 240	100 to 240	100 to 240
	Frame Rate (Hz)	50 / 60	50 / 60	50 / 60
	Refresh Rate (Hz)	1,920	1,920	1,920
Operation Specifications	Lifetime (Half Brightness, hrs) <sup>1)</sup>	80,000	50,000	80,000
	Operating Temperature (°C)	-10°C to +45°C	-10°C to +45°C	-10°C to +45°C
	Operating Humidity	0 - 80%RH	0 - 80%RH	0 - 80%RH
	IP rating Front	IP30	IP30	IP30
	IP rating Rear	IP30	IP30	IP30
Certification	Safety	IEC 60950-1 / EN 60950-1 / UL 60950-1	IEC 60950-1 / EN 60950-1 / UL 60950-1	IEC 60950-1 / EN 60950-1 / UL 60950-1
	EMC	FCC Class "A" / CE / KC	FCC Class "A" / CE / KC	FCC Class "A" / CE / KC
	Environment	RoHS	RoHS	RoHS
Controller		LCIN006	LCIN006	LCIN006

\* LED package with goldwire

1) The Lifetime(Half Brightness) spec is subject to LED package spec.

\* Specifications are subject to change without notice.

Curved <b>LAC Series</b>				
	Model Name	LAC029DD4	LAC039DD3	LAC039DD4
Physical Parameters	Pixel Configuration	3 in 1 SMD	3 in 1 SMD	3 in 1 SMD
	Pixel Pitch (mm)	2.97	3.90	3.91
	Module Resolution (W × H)	168 × 42	128 × 32	128 × 32
	Module Dimensions (W × H, mm)	500 × 125	500 × 125	500 × 125
	Weight per Module (kg)	1.00	1.00	1.00
	No. of Modules per Unit Case (W × H)	1 × 4	1 × 4	1 × 4
	Unit Case Resolution (W × H)	168 × 168	128 × 128	128 × 128
	Unit Case Dimensions (W × H × D, mm)	500 × 500 × 84	500 × 500 × 84	500 × 500 × 84
	Unit Case Surface Area (m <sup>2</sup> )	0.250	0.250	0.250
	Weight per Unit Case (kg/unit)	8.9	8.9	8.9
	Weight per Square Meter (kg/m <sup>2</sup> )	35.6	35.6	35.6
	Physical Pixel Density (pixels/m <sup>2</sup> )	112,896	65,536	65,536
	Flatness of Unit Case (mm)	±0.3	±0.3	±0.3
	Unit Case Material	Die Casting Aluminum	Die Casting Aluminum	Die Casting Aluminum
	Service Access	Front or Rear	Front or Rear	Front or Rear
Optical Specifications	Brightness (After Calibration)	1,200 cd/m <sup>2</sup>	1,200 cd/m <sup>2</sup>	1,200 cd/m <sup>2</sup>
	Color Temperature	6,500	6,500	6,500
	Viewing Angle (H × V)	160 × 160	160 × 160	160 × 160
	Brightness Uniformity	97%	97%	97%
	Color Uniformity	±0.003Cx,Cy	±0.003Cx,Cy	±0.003Cx,Cy
	Contrast Ratio	5,000	5,000	5,000
	Processing Depth (bit)	13	14	14
Electrical Specifications	Power Consumption (W/unit, Avg.)	50	50	50
	Power Consumption (W/unit, Max.)	150	150	150
	Power Consumption (W/m <sup>2</sup> , Max.)	600	600	600
	Power Supply (V)	100 to 240	100 to 240	100 to 240
	Frame Rate (Hz)	50 / 60	50 / 60	50 / 60
	Refresh Rate (Hz)	1,920	3,840	3,840
Operation Specifications	Lifetime (Half Brightness, hrs) <sup>1)</sup>	50,000	80,000	50,000
	Operating Temperature (°C)	-10°C to +45°C	-10°C to +45°C	-10°C to +45°C
	Operating Humidity	0 - 80%RH	0 - 80%RH	0 - 80%RH
	IP rating Front	IP30	IP30	IP30
	IP rating Rear	IP30	IP30	IP30
Certification	Safety	IEC 60950-1 / EN 60950-1 / UL 60950-1	IEC 60950-1 / EN 60950-1 / UL 60950-1	IEC 60950-1 / EN 60950-1 / UL 60950-1
	EMC	FCC Class "A" / CE / KC	FCC Class "A" / CE / KC	FCC Class "A" / CE / KC
	Environment	RoHS	RoHS	RoHS
Controller		LCIN006	LCIN006	LCIN006

\* LED package with goldwire

1) The Lifetime(Half Brightness) spec is subject to LED package spec.



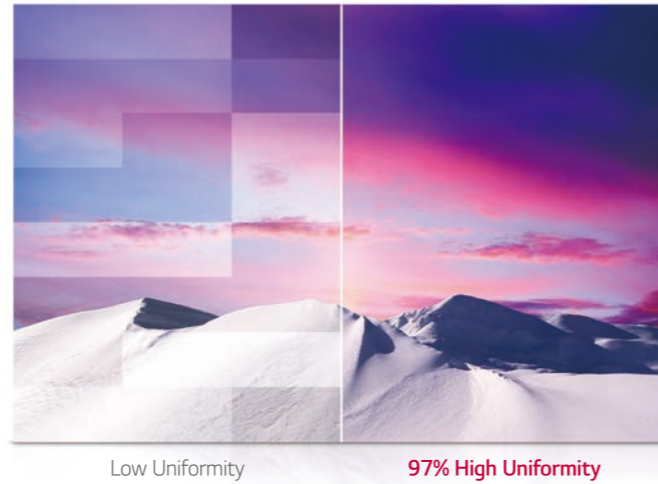
# OUTDOOR LED SIGNAGE

Offering Outstanding Visual Impact with High Durability

Diverse models available in a range of IP rated casing designs for outdoor applications including in stadiums, for advertisements and public displays.

### Uniform Picture Quality

Every step from production is strictly managed, while factory calibration ensures consistent quality between the LED units. The display provides seamless content with 97% brightness uniformity.



Low Uniformity

97% High Uniformity

### Vividness with Color Accuracy

LG's rigorous quality standards also make LG LED signage reproduce accurate colors, vividly displaying the original colors of objects without distortion.



Inaccurate Color

Accurate Color

### Outstanding Visibility

Offering powerful max. 8,000 cd/m<sup>2</sup> brightness, this super-bright display excels outdoors even in direct sunlight, instantly captivating attention and effectively delivering content.



### Smooth Playback in Dynamic Motion

A high refresh rate of max. 4,000Hz ensures smooth playback. Flicker-free images prevent the black bars that appear in video recordings, as well as viewer eye strain and blurred vision.

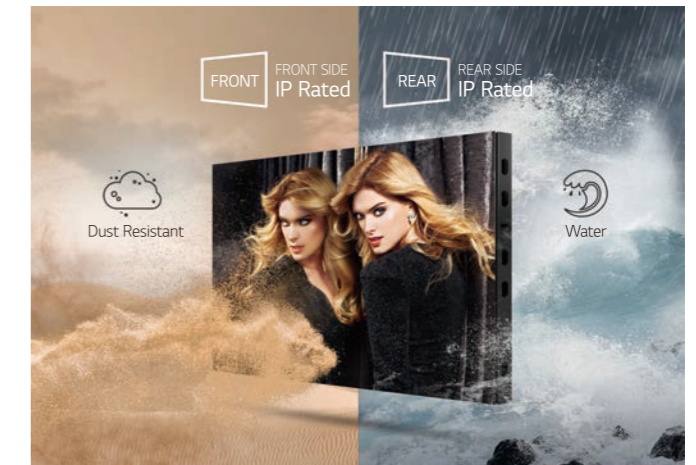


Low Refresh Rate

High Refresh Rate (4,000Hz)

### Reliable Weatherproof Design

The design of the front and back of the LED cabinet has IP-rated durability. This keeps it resistant to dust and moisture penetration, allowing stable operation unaffected by weather and harmful outdoor environments.



### RoHS Certified Safe Product

Boasting RoHS certification, all LG LED signage models are environmentally-friendly products that do not use materials harmful to the environment and people.





\* Models may vary by region. Check with local sales for availability.



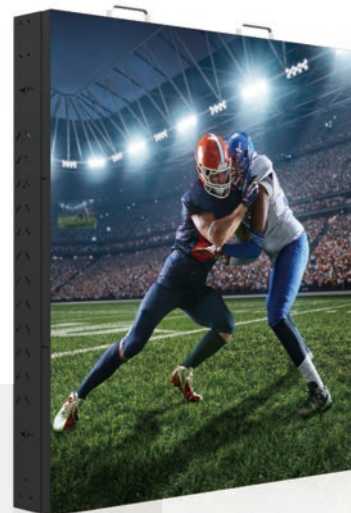
Stadium  
**LBS Series**

- Pixel pitch: 6.0 / 8.0 / 10.667 / 12.0 / 16.0 mm
- Brightness (After calibration): 6,000 cd/m<sup>2</sup>
- IP (Front/rear): IP65/54 (LBF160DA1D: IP65/43)
- Refresh rate: 4,000Hz



DOOH  
**LBS Series**

- Pixel pitch: 6.25 / 8.333 / 10.0 mm
- Brightness (After calibration): 6,000 cd/m<sup>2</sup>
- IP (Front/rear): IP66/66
- Refresh rate: 4,000Hz



DOOH  
**LBE Series**

- Pixel pitch: 4.0 / 8.0 / 10.0 mm
- Brightness (After calibration): 5,500 cd/m<sup>2</sup> (LBE080/100DD3)  
5,000 cd/m<sup>2</sup> (LBE040/080/100DD4)
- IP (Front/rear): IP65/54
- Die cast aluminum frame design



Standard  
**LBE Series**

- Pixel pitch: 3.91 / 4.63 / 6.94 mm
- Brightness (After calibration): 5,500 cd/m<sup>2</sup> (LBE039/046/069DD3(D))  
5,000 cd/m<sup>2</sup> (LBE039/046/069DD4(D))
- IP (Front/rear): IP65/54
- Lightweight and slim design
- Easy installation and teardown for rental solution

High Brightness  
**LBH Series**

- Pixel pitch: 10.66 / 16.0 mm
- Pixel configuration: Oval
- Brightness (After calibration): 6,000 cd/m<sup>2</sup> (LBH106VD3-B)  
8,000 cd/m<sup>2</sup> (LBH160VD3DB)
- IP (Front/rear): IP65/65



\* Specifications are subject to change without notice.

Stadium  
**LBS Series**

	Model Name	LBS060DA1D	LBS060DA3D	LBS080DA1D	LBS080DA3D
Physical Parameters	Pixel Configuration	3 in 1 SMD	3 in 1 SMD	3 in 1 SMD	3 in 1 SMD
	Pixel Pitch (mm)	6.00	6.00	8.00	8.00
	Module Resolution (W × H)	32 × 32	32 × 32	24 × 24	24 × 24
	Module Dimensions (W × H, mm)	192 × 192	192 × 192	192 × 192	192 × 192
	Weight per Module (kg)	0.54	0.54	0.57	0.57
	No. of Modules per Unit Case (W × H)	6 × 4	6 × 4	8 × 8	8 × 8
	Unit Case Resolution (W × H)	192 × 128	192 × 128	192 × 192	192 × 192
	Unit Case Dimensions (W × H × D, mm)	1,152 × 768 × 217	1,152 × 768 × 217	1,536 × 1,536 × 222	1,536 × 1,536 × 222
	Unit Case Surface Area (m <sup>2</sup> )	0.885	0.885	2.359	2.359
	Weight per Unit Case (kg/unit)	42.0	42.0	104.0	104.0
	Weight per Square Meter (kg/m <sup>2</sup> )	47.5	47.5	44.1	44.1
	Physical Pixel Density (pixels/m <sup>2</sup> )	27,777	27,777	15,625	15,625
	Flatness of Unit Case (mm)	±1.0	±1.0	±1.0	±1.0
	Unit Case Material	Aluminum Metal Sheet	Aluminum Metal Sheet	Aluminum Metal Sheet	Aluminum Metal Sheet
	Service Access	Front or Rear	Front or Rear	Front and Rear	Front and Rear
Optical Specifications	Brightness (After Calibration)	6,000 cd/m <sup>2</sup>	6,000 cd/m <sup>2</sup>	6,000 cd/m <sup>2</sup>	6,000 cd/m <sup>2</sup>
	Color Temperature	3,500 - 8,500	3,500 - 8,500	3,500 - 8,500	3,500 - 8,500
	Viewing Angle (H × V)	160 × 135	160 × 135	160 × 135	160 × 135
	Brightness Uniformity	97%	97%	97%	97%
	Color Uniformity	±0.05Cx,Cy	±0.05Cx,Cy	±0.05Cx,Cy	±0.05Cx,Cy
	Contrast Ratio	3,000	3,000	3,000	3,000
	Processing Depth (bit)	16	16	16	16
Electrical Specifications	Power Consumption (W/unit, Avg.)	240	232	584	552
	Power Consumption (W/unit, Max.)	600	580	1,460	1,380
	Power Consumption (W/m <sup>2</sup> , Max.)	678	656	619	585
	Power Supply (V)	100 to 240	100 to 240	100 to 240	100 to 240
	Frame Rate (Hz)	50 / 60	50 / 60	50 / 60	50 / 60
	Refresh Rate (Hz)	4,000	4,000	4,000	4,000
Operation Specifications	Lifetime (Half Brightness, hrs) <sup>1)</sup>	100,000	100,000	100,000	100,000
	Operating Temperature (°C)	-20°C to +50°C	-20°C to +50°C	-20°C to +50°C	-20°C to +50°C
	Operating Humidity	< 90%RH	< 90%RH	< 90%RH	< 90%RH
	IP rating Front	IP65	IP65	IP65	IP65
	IP rating Rear	IP54	IP54	IP54	IP54
Certification	Safety	IEC 60950-1 / EN 60950-1 / UL 60950-1	IEC 60950-1 / EN 60950-1 / UL 60950-1	IEC 60950-1 / EN 60950-1 / UL 60950-1	IEC 60950-1 / EN 60950-1 / UL 60950-1
	EMC	FCC Class "A" / CE / KC	FCC Class "A" / CE / KC	FCC Class "A" / CE / KC	FCC Class "A" / CE / KC
	Environment	RoHS	RoHS	RoHS	RoHS
Controller		LCLH001	LCLH001	LCLH001	LCLH001

\* LED package with goldwire

1) The Lifetime(Half Brightness) spec is subject to LED package spec.

\* Specifications are subject to change without notice.

Stadium  
**LBS Series**

	Model Name	LBS100DA1D	LBS100DA3D	LBS120DA1D	LBS120DA3D
Physical Parameters	Pixel Configuration	3 in 1 SMD	3 in 1 SMD	3 in 1 SMD	3 in 1 SMD
	Pixel Pitch (mm)	10.667	10.667	12.00	12.00
	Module Resolution (W × H)	18 × 18	18 × 18	16 × 16	16 × 16
	Module Dimensions (W × H, mm)	192 × 192	192 × 192	192 × 192	192 × 192
	Weight per Module (kg)	0.56	0.56	0.56	0.56
	No. of Modules per Unit Case (W × H)	8 × 8	8 × 8	8 × 8	8 × 8
	Unit Case Resolution (W × H)	144 × 144	144 × 144	128 × 128	128 × 128
	Unit Case Dimensions (W × H × D, mm)	1,536 × 1,536 × 222	1,536 × 1,536 × 222	1,536 × 1,536 × 223	1,536 × 1,536 × 223
	Unit Case Surface Area (m <sup>2</sup> )	2.359	2.359	2.359	2.359
	Weight per Unit Case (kg/unit)	104.0	104.0	104.0	104.0
	Weight per Square Meter (kg/m <sup>2</sup> )	44.1	44.1	44.1	44.1
	Physical Pixel Density (pixels/m <sup>2</sup> )	8,789	8,789	6,944	6,944
	Flatness of Unit Case (mm)	±1.0	±1.0	±1.0	±1.0
	Unit Case Material	Aluminum Metal Sheet	Aluminum Metal Sheet	Aluminum Metal Sheet	Aluminum Metal Sheet
	Service Access	Front and Rear	Front and Rear	Front and Rear	Front and Rear
Optical Specifications	Brightness (After Calibration)	6,000 cd/m <sup>2</sup>	6,000 cd/m <sup>2</sup>	6,000 cd/m <sup>2</sup>	6,000 cd/m <sup>2</sup>
	Color Temperature	3,500 - 8,500	3,500 - 8,500	3,500 - 8,500	3,500 - 8,500
	Viewing Angle (H × V)	160 × 145	160 × 145	160 × 125	160 × 125
	Brightness Uniformity	97%	97%	97%	97%
	Color Uniformity	±0.05Cx,Cy	±0.05Cx,Cy	±0.05Cx,Cy	±0.05Cx,Cy
	Contrast Ratio	3,000	3,000	3,000	3,000
	Processing Depth (bit)	16	16	16	16
Electrical Specifications	Power Consumption (W/unit, Avg.)	616	580	580	544
	Power Consumption (W/unit, Max.)	1,540	1,450	1,450	1,360
	Power Consumption (W/m <sup>2</sup> , Max.)	653	615	615	576
	Power Supply (V)	100 to 240	100 to 240	100 to 240	100 to 240
	Frame Rate (Hz)	50 / 60	50 / 60	50 / 60	50 / 60
	Refresh Rate (Hz)	4,000	4,000	4,000	4,000
Operation Specifications	Lifetime (Half Brightness, hrs) <sup>1)</sup>	100,000	100,000	100,000	100,000
	Operating Temperature (°C)	-20°C to +50°C	-20°C to +50°C	-20°C to +50°C	-20°C to +50°C
	Operating Humidity	< 90%RH	< 90%RH	< 90%RH	< 90%RH
	IP rating Front	IP65	IP65	IP65	IP65
	IP rating Rear	IP54	IP54	IP54	IP54
Certification	Safety	IEC 60950-1 / EN 60950-1 / UL 60950-1	IEC 60950-1 / EN 60950-1 / UL 60950-1	IEC 60950-1 / EN 60950-1 / UL 60950-1	IEC 60950-1 / EN 60950-1 / UL 60950-1
	EMC	FCC Class "A" / CE / KC	FCC Class "A" / CE / KC	FCC Class "A" / CE / KC	FCC Class "A" / CE / KC
	Environment	RoHS	RoHS	RoHS	RoHS
Controller		LCLH001	LCLH001	LCLH001	LCLH001

\* LED package with goldwire

1) The Lifetime(Half Brightness) spec is subject to LED package spec.

\* Specifications are subject to change without notice.

Stadium  
**LBS Series**

	Model Name	LBS160DA1D	LBS160DA3D	LBF160DA1D	LBB160DA1D2
Physical Parameters	Pixel Configuration	3 in 1 SMD	3 in 1 SMD	3 in 1 SMD	3 in 1 SMD
	Pixel Pitch (mm)	16.00	16.00	16.00	16.00
	Module Resolution (W × H)	12 × 12	12 × 12	12 × 12	12 × 12
	Module Dimensions (W × H, mm)	192 × 192	192 × 192	192 × 192	192 × 192
	Weight per Module (kg)	0.56	0.56	0.56	0.58
	No. of Modules per Unit Case (W × H)	8 × 8	8 × 8	4 × 5	8 × 5
	Unit Case Resolution (W × H)	96 × 96	96 × 96	48 × 60	96 × 60
	Unit Case Dimensions (W × H × D, mm)	1,536 × 1,536 × 227	1,536 × 1,536 × 227	768 × 960 × 254	1,536 × 960 × 215
	Unit Case Surface Area (m <sup>2</sup> )	2.359	2.359	0.737	1.475
	Weight per Unit Case (kg/unit)	104.0	104.0	40.0	71.0
	Weight per Square Meter (kg/m <sup>2</sup> )	44.1	44.1	54.3	48.1
	Physical Pixel Density (pixels/m <sup>2</sup> )	3,906	3,906	3,906	3,906
	Flatness of Unit Case (mm)	±1.0	±1.0	±1.0	±1.0
	Unit Case Material	Aluminum Metal Sheet	Aluminum Metal Sheet	Aluminum Metal Sheet	Aluminum Metal Sheet
	Service Access	Front and Rear	Front and Rear	Top	Front and Rear
Optical Specifications	Brightness (After Calibration)	6,000 cd/m <sup>2</sup>	6,000 cd/m <sup>2</sup>	6,000 cd/m <sup>2</sup>	6,000 cd/m <sup>2</sup>
	Color Temperature	3,500 - 8,500	3,500 - 8,500	3,500 - 8,500	3,500 - 8,500
	Viewing Angle (H × V)	160 × 105	160 × 105	160 × 105	160 × 105
	Brightness Uniformity	97%	97%	97%	97%
	Color Uniformity	±0.05Cx,Cy	±0.05Cx,Cy	±0.05Cx,Cy	±0.05Cx,Cy
	Contrast Ratio	3,000	3,000	3,000	3,000
	Processing Depth (bit)	16	16	16	16
Electrical Specifications	Power Consumption (W/unit, Avg.)	620	584	184	372
	Power Consumption (W/unit, Max.)	1,550	1,460	460	930
	Power Consumption (W/m <sup>2</sup> , Max.)	657	619	624	631
	Power Supply (V)	100 to 240	100 to 240	100 to 240	100 to 240
	Frame Rate (Hz)	50 / 60	50 / 60	50 / 60	50 / 60
	Refresh Rate (Hz)	4,000	4,000	4,000	4,000
Operation Specifications	Lifetime (Half Brightness, hrs) <sup>1)</sup>	100,000	100,000	100,000	100,000
	Operating Temperature (°C)	-20°C to +50°C	-20°C to +50°C	-20°C to +50°C	-20°C to +50°C
	Operating Humidity	< 90%RH	< 90%RH	< 90%RH	10-90%RH
	IP rating Front	IP65	IP65	IP65	IP65
	IP rating Rear	IP54	IP54	IP43	IP54
Certification	Safety	IEC 60950-1 / EN 60950-1 / UL 60950-1	IEC 60950-1 / EN 60950-1 / UL 60950-1	IEC 60950-1 / EN 60950-1 / UL 60950-1	IEC 60950-1 / EN 60950-1 / UL 60950-1
	EMC	FCC Class "A" / CE / KC	FCC Class "A" / CE / KC	FCC Class "A" / CE / KC	FCC Class "A" / CE / KC
	Environment	RoHS	RoHS	RoHS	RoHS
Controller		LCLH001	LCLH001	LCLH001	LCLH001

\* LED package with goldwire

1) The Lifetime(Half Brightness) spec is subject to LED package spec.

\* Specifications are subject to change without notice.

DOOH  
**LBS Series**

	Model Name	LBS062DA1-V	LBS062DA3-V	LBS083DA1-V
Physical Parameters	Pixel Configuration	3 in 1 SMD	3 in 1 SMD	3 in 1 SMD
	Pixel Pitch (mm)	6.25	6.25	8.333
	Module Resolution (W × H)	64 × 64	64 × 64	48 × 48
	Module Dimensions (W × H, mm)	400 × 400	400 × 400	400 × 400
	Weight per Module (kg)	2.45	2.45	2.45
	No. of Modules per Unit Case (W × H)	2 × 4	2 × 4	2 × 4
	Unit Case Resolution (W × H)	128 × 256	128 × 256	96 × 192
	Unit Case Dimensions (W × H × D, mm)	800 × 1,600 × 143.5	800 × 1,600 × 143.5	800 × 1,600 × 143.5
	Unit Case Surface Area (m <sup>2</sup> )	1.280	1.280	1.280
	Weight per Unit Case (kg/unit)	40.0	40.0	40.0
	Weight per Square Meter (kg/m <sup>2</sup> )	31.3	31.3	31.3
	Physical Pixel Density (pixels/m <sup>2</sup> )	25,600	25,600	14,400
	Flatness of Unit Case (mm)	±1.0	±1.0	±1.0
	Unit Case Material	Aluminum Metal Sheet	Aluminum Metal Sheet	Aluminum Metal Sheet
	Service Access	Front and Rear	Front and Rear	Front and Rear
Optical Specifications	Brightness (After Calibration)	6,000 cd/m <sup>2</sup>	6,000 cd/m <sup>2</sup>	6,000 cd/m <sup>2</sup>
	Color Temperature	3,500 - 8,500	3,500 - 8,500	3,500 - 8,500
	Viewing Angle (H × V)	160 × 130	160 × 130	160 × 125
	Brightness Uniformity	97%	97%	97%
	Color Uniformity	±0.05Cx,Cy	±0.05Cx,Cy	±0.05Cx,Cy
	Contrast Ratio	3,000	3,000	3,000
	Processing Depth (bit)	16	16	16
Electrical Specifications	Power Consumption (W/unit, Avg.)	312	312	320
	Power Consumption (W/unit, Max.)	780	780	800
	Power Consumption (W/m <sup>2</sup> , Max.)	609	609	625
	Power Supply (V)	100 to 240	100 to 240	100 to 240
	Frame Rate (Hz)	50 / 60	50 / 60	50 / 60
	Refresh Rate (Hz)	4,000	4,000	4,000
Operation Specifications	Lifetime (Half Brightness, hrs) <sup>1)</sup>	100,000	100,000	100,000
	Operating Temperature (°C)	-20°C to +50°C	-20°C to +50°C	-20°C to +50°C
	Operating Humidity	< 90%RH	< 90%RH	< 90%RH
	IP rating Front	IP66	IP66	IP66
	IP rating Rear	IP66	IP66	IP66
Certification	Safety	IEC 60950-1 / EN 60950-1 / UL 60950-1	IEC 60950-1 / EN 60950-1 / UL 60950-1	IEC 60950-1 / EN 60950-1 / UL 60950-1
	EMC	FCC Class "A" / CE / KC	FCC Class "A" / CE / KC	FCC Class "A" / CE / KC
	Environment	RoHS	RoHS	RoHS
Controller		LCLH001	LCLH001	LCLH001

\* LED package with goldwire

1) The Lifetime(Half Brightness) spec is subject to LED package spec.

\* Specifications are subject to change without notice.

		DOOH <b>LBS Series</b>			
		Model Name	LBS083DA3-V	LBS100DA1-V	LBS100DA3-V
Physical Parameters	Pixel Configuration		3 in 1 SMD	3 in 1 SMD	3 in 1 SMD
	Pixel Pitch (mm)		8.333	10.00	10.00
	Module Resolution (W × H)		48 × 48	40 × 40	40 × 40
	Module Dimensions (W × H, mm)		400 × 400	400 × 400	400 × 400
	Weight per Module (kg)		2.45	2.45	2.45
	No. of Modules per Unit Case (W × H)		2 × 4	2 × 4	2 × 4
	Unit Case Resolution (W × H)		96 × 192	80 × 160	80 × 160
	Unit Case Dimensions (W × H × D, mm)		800 × 1,600 × 143.5	800 × 1,600 × 143.5	800 × 1,600 × 143.5
	Unit Case Surface Area (m <sup>2</sup> )		1.280	1.280	1.280
	Weight per Unit Case (kg/unit)		40.0	40.0	40.0
	Weight per Square Meter (kg/m <sup>2</sup> )		31.3	31.3	31.3
	Physical Pixel Density (pixels/m <sup>2</sup> )		14,400	10,000	10,000
	Flatness of Unit Case (mm)		±1.0	±1.0	±1.0
	Unit Case Material		Aluminum Metal Sheet	Aluminum Metal Sheet	Aluminum Metal Sheet
	Service Access		Front and Rear	Front and Rear	Front and Rear
Optical Specifications	Brightness (After Calibration)		6,000 cd/m <sup>2</sup>	6,000 cd/m <sup>2</sup>	6,000 cd/m <sup>2</sup>
	Color Temperature		3,500 - 8,500	3,500 - 8,500	3,500 - 8,500
	Viewing Angle (H × V)		160 × 125	160 × 115	160 × 115
	Brightness Uniformity		97%	97%	97%
	Color Uniformity		±0.05Cx,Cy	±0.05Cx,Cy	±0.05Cx,Cy
	Contrast Ratio		3,000	3,000	3,000
	Processing Depth (bit)		16	16	16
Electrical Specifications	Power Consumption (W/unit, Avg.)		320	300	300
	Power Consumption (W/unit, Max.)		800	750	750
	Power Consumption (W/m <sup>2</sup> , Max.)		625	586	586
	Power Supply (V)		100 to 240	100 to 240	100 to 240
	Frame Rate (Hz)		50 / 60	50 / 60	50 / 60
Refresh Rate (Hz)		4,000	4,000	4,000	
Operation Specifications	Lifetime (Half Brightness, hrs) <sup>1)</sup>		100,000	100,000	100,000
	Operating Temperature (°C)		-20°C to +50°C	-20°C to +50°C	-20°C to +50°C
	Operating Humidity		< 90%RH	< 90%RH	< 90%RH
	IP rating Front		IP66	IP66	IP66
	IP rating Rear		IP66	IP66	IP66
Certification	Safety		IEC 60950-1 / EN 60950-1 / UL 60950-1	IEC 60950-1 / EN 60950-1 / UL 60950-1	IEC 60950-1 / EN 60950-1 / UL 60950-1
	EMC		FCC Class "A" / CE / KC	FCC Class "A" / CE / KC	FCC Class "A" / CE / KC
	Environment		RoHS	RoHS	RoHS
Controller		LCLH001	LCLH001	LCLH001	

\* LED package with goldwire

1) The Lifetime(Half Brightness) spec is subject to LED package spec.

\* Specifications are subject to change without notice.

		DOOH <b>LBE Series</b>					
		Model Name	LBE040DD4	LBE080DD3	LBE080DD4	LBE100DD3	LBE100DD4
Physical Parameters	Pixel Configuration		3 in 1 SMD	3 in 1 SMD	3 in 1 SMD	3 in 1 SMD	3 in 1 SMD
	Pixel Pitch (mm)		4.00	8.00	8.00	10.00	10.00
	Module Resolution (W × H)		80 × 60	40 × 30	40 × 30	32 × 24	32 × 24
	Module Dimensions (W × H, mm)		320 × 240	320 × 240	320 × 240	320 × 240	320 × 240
	Weight per Module (kg)		1.30	1.30	1.30	1.30	1.30
	No. of Modules per Unit Case (W × H)		2x3	2 × 3	2 × 3	2 × 3	2 × 3
	Unit Case Resolution (W × H)		160 × 180	80 × 90	80 × 90	64 × 72	64 × 72
	Unit Case Dimensions (W × H × D, mm)		640 × 720 × 90	640 × 720 × 90	640 × 720 × 90	640 × 720 × 90	640 × 720 × 90
	Unit Case Surface Area (m <sup>2</sup> )		0.461	0.461	0.461	0.461	0.461
	Weight per Unit Case (kg/unit)		17.0	17.0	17.0	17.0	17.0
	Weight per Square Meter (kg/m <sup>2</sup> )		36.9	36.9	36.9	36.9	36.9
	Physical Pixel Density (pixels/m <sup>2</sup> )		62,500	15,625	15,625	10,000	10,000
	Flatness of Unit Case (mm)		±0.3	±0.5	±0.5	±0.5	±0.5
	Unit Case Material		Aluminum Profiles	Aluminum Profiles	Aluminum Profiles	Aluminum Profiles	Aluminum Profiles
	Service Access		Rear	Front or Rear	Front or Rear	Front or Rear	Front or Rear
Optical Specifications	Brightness (After Calibration)		5,000 cd/m <sup>2</sup>	5,500 cd/m <sup>2</sup>	5,000 cd/m <sup>2</sup>	5,500 cd/m <sup>2</sup>	5,000 cd/m <sup>2</sup>
	Color Temperature		6,500	6,500	6,500	6,500	6,500
	Viewing Angle (H × V)		160 × 120	160 × 120	160 × 120	160 × 120	160 × 120
	Brightness Uniformity		97%	97%	97%	97%	97%
	Color Uniformity		±0.003Cx,Cy	±0.003Cx,Cy	±0.003Cx,Cy	±0.003Cx,Cy	±0.003Cx,Cy
	Contrast Ratio		5,000	5,000	5,000	5,000	5,000
	Processing Depth (bit)		14	14	14	14	14
Electrical Specifications	Power Consumption (W/unit, Avg.)		120	110	110	110	110
	Power Consumption (W/unit, Max.)		360	330	330	330	330
	Power Consumption (W/m <sup>2</sup> , Max.)		780	720	720	720	720
	Power Supply (V)		100 to 240	100 to 240	100 to 240	100 to 240	100 to 240
	Frame Rate (Hz)		50 / 60	50 / 60	50 / 60	50 / 60	50 / 60
Refresh Rate (Hz)		3,840	3,840	3,840	3,840	3,840	
Operation Specifications	Lifetime (Half Brightness, hrs) <sup>1)</sup>		50,000	80,000	50,000	80,000	50,000
	Operating Temperature (°C)		-10°C to +45°C	-10°C to +45°C	-10°C to +45°C	-10°C to +50°C	-10°C to +45°C
	Operating Humidity		0 - 80%RH	0 - 80%RH	0 - 80%RH	0 - 80%RH	0 - 80%RH
	IP rating Front		IP65	IP65	IP65	IP65	IP65
	IP rating Rear		IP54	IP54	IP54	IP54	IP54
Certification	Safety		IEC 60950-1 / EN 60950-1 / UL 60950-1	IEC 60950-1 / EN 60950-1 / UL 60950-1	IEC 60950-1 / EN 60950-1 / UL 60950-1	IEC 60950-1 / EN 60950-1 / UL 60950-1	IEC 60950-1 / EN 60950-1 / UL 60950-1
	EMC		FCC Class "A" / CE / KC	FCC Class "A" / CE / KC	FCC Class "A" / CE / KC	FCC Class "A" / CE / KC	FCC Class "A" / CE / KC
	Environment		RoHS	RoHS	RoHS	RoHS	RoHS
Controller		LCIN006	LCIN006	LCIN006	LCIN006	LCIN006	

\* LED package with goldwire

1) The Lifetime(Half Brightness) spec is subject to LED package spec.

\* Specifications are subject to change without notice.

		Standard <b>LBE Series</b>			
Model Name		LBE039DD3D	LBE039DD3	LBE039DD4D	LBE039DD4
Physical Parameters	Pixel Configuration	3 in 1 SMD	3 in 1 SMD	3 in 1 SMD	3 in 1 SMD
	Pixel Pitch (mm)	3.91	3.91	3.91	3.91
	Module Resolution (W × H)	64 × 128	64 × 128	64 × 128	64 × 128
	Module Dimensions (W × H, mm)	250 × 500	250 × 500	250 × 500	250 × 500
	Weight per Module (kg)	1.80	1.80	1.80	1.80
	No. of Modules per Unit Case (W × H)	2 × 1	2 × 2	2 × 1	2 × 2
	Unit Case Resolution (W × H)	128 × 128	128 × 256	128 × 128	128 × 256
	Unit Case Dimensions (W × H × D, mm)	500 × 500 × 68	500 × 1,000 × 68	500 × 500 × 68	500 × 1,000 × 68
	Unit Case Surface Area (m <sup>2</sup> )	0.250	0.500	0.250	0.500
	Weight per Unit Case (kg/unit)	8.2	12.5	8.2	12.5
	Weight per Square Meter (kg/m <sup>2</sup> )	32.8	25.0	32.8	25.0
	Physical Pixel Density (pixels/m <sup>2</sup> )	65,536	65,536	65,536	65,536
	Flatness of Unit Case (mm)	±0.3	±0.3	±0.3	±0.3
	Unit Case Material	Die Casting Magnesium	Die Casting Magnesium	Die Casting Magnesium	Die Casting Magnesium
	Service Access	Front or Rear	Front or Rear	Front or Rear	Front or Rear
Optical Specifications	Brightness (After Calibration)	5,500 cd/m <sup>2</sup>	5,500 cd/m <sup>2</sup>	5,000 cd/m <sup>2</sup>	5,000 cd/m <sup>2</sup>
	Color Temperature	6,500	6,500	6,500	6,500
	Viewing Angle (H × V)	160 × 120	160 × 120	160 × 120	160 × 120
	Brightness Uniformity	97%	97%	97%	97%
	Color Uniformity	±0.003Cx,Cy	±0.003Cx,Cy	±0.003Cx,Cy	±0.003Cx,Cy
	Contrast Ratio	5,000	5,000	5,000	5,000
	Processing Depth (bit)	14	14	14	14
Electrical Specifications	Power Consumption (W/unit, Avg.)	53	110	53	110
	Power Consumption (W/unit, Max.)	160	330	160	330
	Power Consumption (W/m <sup>2</sup> , Max.)	640	660	640	660
	Power Supply (V)	100 to 240	100 to 240	100 to 240	100 to 240
	Frame Rate (Hz)	50 / 60	50 / 60	50 / 60	50 / 60
	Refresh Rate (Hz)	3,000	3,000	3,840	3,840
Operation Specifications	Lifetime (Half Brightness, hrs) <sup>1)</sup>	80,000	80,000	50,000	50,000
	Operating Temperature (°C)	-10°C to +45°C	-10°C to +45°C	-10°C to +45°C	-10°C to +45°C
	Operating Humidity	0 - 80%RH	0 - 80%RH	0 - 80%RH	0 - 80%RH
	IP rating Front	IP65	IP65	IP65	IP65
	IP rating Rear	IP54	IP54	IP54	IP54
Certification	Safety	IEC 60950-1 / EN 60950-1 / UL 60950-1	IEC 60950-1 / EN 60950-1 / UL 60950-1	IEC 60950-1 / EN 60950-1 / UL 60950-1	IEC 60950-1 / EN 60950-1 / UL 60950-1
	EMC	FCC Class "A" / CE / KC	FCC Class "A" / CE / KC	FCC Class "A" / CE / KC	FCC Class "A" / CE / KC
	Environment	RoHS	RoHS	RoHS	RoHS
Controller		LCIN006	LCIN006	LCIN006	LCIN006

\* LED package with goldwire

1) The Lifetime(Half Brightness) spec is subject to LED package spec.

\* Specifications are subject to change without notice.

		Standard <b>LBE Series</b>			
Model Name		LBE046DD3D	LBE046DD3	LBE046DD4D	LBE046DD4
Physical Parameters	Pixel Configuration	3 in 1 SMD	3 in 1 SMD	3 in 1 SMD	3 in 1 SMD
	Pixel Pitch (mm)	4.63	4.63	4.63	4.63
	Module Resolution (W × H)	54 × 108	54 × 108	54 × 108	54 × 108
	Module Dimensions (W × H, mm)	250 × 500	250 × 500	250 × 500	250 × 500
	Weight per Module (kg)	1.80	1.80	1.80	1.80
	No. of Modules per Unit Case (W × H)	2 × 1	2 × 2	2 × 1	2 × 2
	Unit Case Resolution (W × H)	108 × 108	108 × 216	108 × 108	108 × 216
	Unit Case Dimensions (W × H × D, mm)	500 × 500 × 68	500 × 1,000 × 68	500 × 500 × 68	500 × 1,000 × 68
	Unit Case Surface Area (m <sup>2</sup> )	0.250	0.500	0.250	0.500
	Weight per Unit Case (kg/unit)	8.2	12.5	8.2	12.5
	Weight per Square Meter (kg/m <sup>2</sup> )	32.8	25.0	32.8	25.0
	Physical Pixel Density (pixels/m <sup>2</sup> )	46,656	46,656	46,656	46,656
	Flatness of Unit Case (mm)	±0.3	±0.3	±0.3	±0.3
	Unit Case Material	Die Casting Magnesium	Die Casting Magnesium	Die Casting Magnesium	Die Casting Magnesium
	Service Access	Rear	Rear	Rear	Rear
Optical Specifications	Brightness (After Calibration)	5,500 cd/m <sup>2</sup>	5,500 cd/m <sup>2</sup>	5,000 cd/m <sup>2</sup>	5,000 cd/m <sup>2</sup>
	Color Temperature	6,500	6,500	6,500	6,500
	Viewing Angle (H × V)	160 × 120	160 × 120	160 × 120	160 × 120
	Brightness Uniformity	97%	97%	97%	97%
	Color Uniformity	±0.003Cx,Cy	±0.003Cx,Cy	±0.003Cx,Cy	±0.003Cx,Cy
	Contrast Ratio	5,000	5,000	5,000	5,000
	Processing Depth (bit)	14	14	14	14
Electrical Specifications	Power Consumption (W/unit, Avg.)	53	110	53	110
	Power Consumption (W/unit, Max.)	160	330	160	330
	Power Consumption (W/m <sup>2</sup> , Max.)	640	660	640	660
	Power Supply (V)	100 to 240	100 to 240	100 to 240	100 to 240
	Frame Rate (Hz)	50 / 60	50 / 60	50 / 60	50 / 60
	Refresh Rate (Hz)	3,840	3,840	3,840	3,840
Operation Specifications	Lifetime (Half Brightness, hrs) <sup>1)</sup>	80,000	80,000	50,000	50,000
	Operating Temperature (°C)	-10°C to +45°C	-10°C to +45°C	-10°C to +45°C	-10°C to +45°C
	Operating Humidity	0-80%RH	0-80%RH	0-80%RH	0-80%RH
	IP rating Front	IP65	IP65	IP65	IP65
	IP rating Rear	IP54	IP54	IP54	IP54
Certification	Safety	IEC 60950-1 / EN 60950-1 / UL 60950-1	IEC 60950-1 / EN 60950-1 / UL 60950-1	IEC 60950-1 / EN 60950-1 / UL 60950-1	IEC 60950-1 / EN 60950-1 / UL 60950-1
	EMC	FCC Class "A" / CE / KC	FCC Class "A" / CE / KC	FCC Class "A" / CE / KC	FCC Class "A" / CE / KC
	Environment	RoHS	RoHS	RoHS	RoHS
Controller		LCIN006	LCIN006	LCIN006	LCIN006

\* LED package with goldwire

1) The Lifetime(Half Brightness) spec is subject to LED package spec.

\* Specifications are subject to change without notice.

		Standard <b>LBE Series</b>			
		LBE069DD3D	LBE069DD3	LBE069DD4D	LBE069DD4
Physical Parameters	Model Name				
	Pixel Configuration	3 in 1 SMD	3 in 1 SMD	3 in 1 SMD	3 in 1 SMD
	Pixel Pitch (mm)	6.94	6.94	6.94	6.94
	Module Resolution (W × H)	36 × 72	36 × 72	36 × 72	36 × 72
	Module Dimensions (W × H, mm)	250 × 500	250 × 500	250 × 500	250 × 500
	Weight per Module (kg)	1.80	1.80	1.80	1.80
	No. of Modules per Unit Case (W × H)	2 × 1	2 × 2	2 × 1	2 × 2
	Unit Case Resolution (W × H)	72 × 72	72 × 144	72 × 72	72 × 72
	Unit Case Dimensions (W × H × D, mm)	500 × 500 × 68	500 × 1,000 × 68	500 × 500 × 68	500 × 1,000 × 68
	Unit Case Surface Area (m <sup>2</sup> )	0.250	0.500	0.250	0.500
	Weight per Unit Case (kg/unit)	8.2	12.5	8.2	12.5
	Weight per Square Meter (kg/m <sup>2</sup> )	32.8	25.0	32.8	25.0
	Physical Pixel Density (pixels/m <sup>2</sup> )	20,736	20,736	20,736	20,736
	Flatness of Unit Case (mm)	±0.3	±0.3	±0.3	±0.3
	Unit Case Material	Die Casting Magnesium	Die Casting Magnesium	Die Casting Magnesium	Die Casting Magnesium
Service Access	Rear	Rear	Rear	Rear	
Optical Specifications	Brightness (After Calibration)	5,500 cd/m <sup>2</sup>	5,500 cd/m <sup>2</sup>	5,000 cd/m <sup>2</sup>	5,000 cd/m <sup>2</sup>
	Color Temperature	6,500	6,500	6,500	6,500
	Viewing Angle (H × V)	160 × 120	160 × 120	160 × 120	160 × 120
	Brightness Uniformity	97%	97%	97%	97%
	Color Uniformity	±0.003Cx,Cy	±0.003Cx,Cy	±0.003Cx,Cy	±0.003Cx,Cy
	Contrast Ratio	5,000	5,000	5,000	5,000
	Processing Depth (bit)	14	14	14	14
Electrical Specifications	Power Consumption (W/unit, Avg.)	53	110	53	110
	Power Consumption (W/unit, Max.)	160	330	160	330
	Power Consumption (W/m <sup>2</sup> , Max.)	640	660	640	660
	Power Supply (V)	100 to 240	100 to 240	100 to 240	100 to 240
	Frame Rate (Hz)	50 / 60	50 / 60	50 / 60	50 / 60
	Refresh Rate (Hz)	3,840	3,840	3,840	3,840
Operation Specifications	Lifetime (Half Brightness, hrs) <sup>1)</sup>	80,000	80,000	50,000	50,000
	Operating Temperature (°C)	-10°C to +45°C	-10°C to +45°C	-10°C to +45°C	-10°C to +45°C
	Operating Humidity	0 - 80%RH	0 - 80%RH	0 - 80%RH	0 - 80%RH
	IP rating Front	IP65	IP65	IP65	IP65
IP rating Rear	IP54	IP54	IP54	IP54	
Certification	Safety	IEC 60950-1 / EN 60950-1 / UL 60950-1	IEC 60950-1 / EN 60950-1 / UL 60950-1	IEC 60950-1 / EN 60950-1 / UL 60950-1	IEC 60950-1 / EN 60950-1 / UL 60950-1
	EMC	FCC Class "A" / CE / KC	FCC Class "A" / CE / KC	FCC Class "A" / CE / KC	FCC Class "A" / CE / KC
	Environment	RoHS	RoHS	RoHS	RoHS
Controller		LCIN006	LCIN006	LCIN006	LCIN006

\* LED package with goldwire

1) The Lifetime(Half Brightness) spec is subject to LED package spec.

\* Specifications are subject to change without notice.

		High Brightness <b>LBH Series</b>	
		LBH106VD3-B	LBH160VD3DB
Physical Parameters	Model Name		
	Pixel Configuration	Oval	Oval
	Pixel Pitch (mm)	10.66	16.00
	Module Resolution (W × H)	24 × 24	16 × 16
	Module Dimensions (W × H, mm)	256 × 256	256 × 256
	Weight per Module (kg)	1.60	1.60
	No. of Modules per Unit Case (W × H)	4 × 4	4 × 4
	Unit Case Resolution (W × H)	96 × 96	64 × 64
	Unit Case Dimensions (W × H × D, mm)	1,024 × 1,024 × 150	1,024 × 1,024 × 150
	Unit Case Surface Area (m <sup>2</sup> )	1.000	1.048
	Weight per Unit Case (kg/unit)	60.0	60.0
	Weight per Square Meter (kg/m <sup>2</sup> )	60.0	60.0
	Physical Pixel Density (pixels/m <sup>2</sup> )	8,789	3,906
	Flatness of Unit Case (mm)	±0.5	±0.5
	Unit Case Material	Aluminum Metal Sheet	Aluminum Metal Sheet
Service Access	Front or Rear	Front	
Optical Specifications	Brightness (After Calibration)	6,000 cd/m <sup>2</sup>	8,000 cd/m <sup>2</sup>
	Color Temperature	6,500	6,500
	Viewing Angle (H × V)	160 × 120	160 × 120
	Brightness Uniformity	97%	97%
	Color Uniformity	±0.003Cx,Cy	±0.003Cx,Cy
	Contrast Ratio	5,000	5,000
	Processing Depth (bit)	14	16
Electrical Specifications	Power Consumption (W/unit, Avg.)	220	220
	Power Consumption (W/unit, Max.)	682	682
	Power Consumption (W/m <sup>2</sup> , Max.)	650	650
	Power Supply (V)	100 to 240	100 to 240
	Frame Rate (Hz)	50 / 60	50 / 60
	Refresh Rate (Hz)	3,840	3,840
Operation Specifications	Lifetime (Half Brightness, hrs) <sup>1)</sup>	80,000	80,000
	Operating Temperature (°C)	-10°C to +45°C	-10°C to +45°C
	Operating Humidity	0 - 80%RH	0 - 80%RH
	IP rating Front	IP65	IP65
IP rating Rear	IP65	IP65	
Certification	Safety	IEC 60950-1 / EN 60950-1 / UL 60950-1	IEC 60950-1 / EN 60950-1 / UL 60950-1
	EMC	FCC Class "A" / CE / KC	FCC Class "A" / CE / KC
	Environment	RoHS	RoHS
Controller		LCIN006	LCIN006

\* LED package with goldwire

1) The Lifetime(Half Brightness) spec is subject to LED package spec.